

Claudin 3 Antibody

Purified Rabbit Polyclonal Antibody (Pab)

Catalog # AP50074

Product Information

Application	WB, IF, IHC
Primary Accession	O15551
Reactivity	Human, Mouse, Rat
Host	Rabbit
Clonality	polyclonal
Calculated MW	23319

Additional Information

Gene ID	1365
Other Names	Claudin-3, Clostridium perfringens enterotoxin receptor 2, CPE-R 2, CPE-receptor 2, Rat ventral prostate1 protein homolog, hRVP1, CLDN3, C7orf1, CPETR2
Dilution	WB~~ 1:1000 IF~~1:100 IHC~~1:50-1:100
Format	Rabbit IgG in phosphate buffered saline (without Mg ²⁺ and Ca ²⁺), pH 7.4, 150mM NaCl, 0.09% (W/V) sodium azide and 50% glycerol.
Storage Conditions	-20°C

Protein Information

Name	CLDN3
Synonyms	C7orf1, CPETR2
Function	Barrier-forming claudin. Plays a major role in tight junction-specific obliteration of the intercellular space, through calcium-independent cell-adhesion activity.
Cellular Location	Cell junction, tight junction. Cell membrane; Multi-pass membrane protein

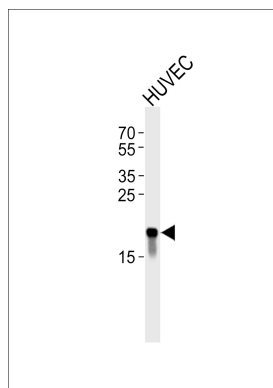
Background

Plays a major role in tight junction-specific obliteration of the intercellular space, through calcium-independent cell-adhesion activity (By similarity).

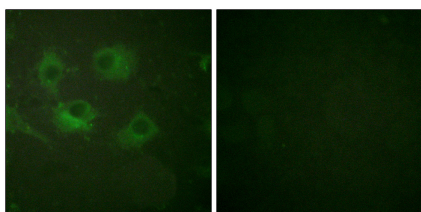
References

Peacock R.E.,et al.Genomics 46:443-449(1997).
Katahira J.,et al.J. Biol. Chem. 272:26652-26658(1997).

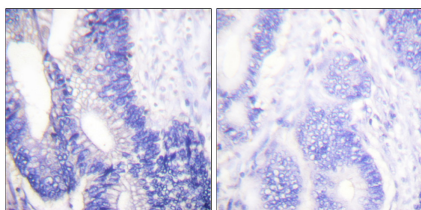
Images



Western blot analysis of lysate from HUVEC cell line,using Claudin 3 Antibody(C0144). C0144 was diluted at 1:1000. A goat anti-rabbit IgG H&L(HRP) at 1:5000 dilution was used as the secondary antibody.Lysate at 35ug.



Immunofluorescence analysis of HuvEc cells, using Claudin 3 antibody .



Immunohistochemical analysis of paraffin-embedded human colon carcinoma tissue using Claudin 3 antibody.

Please note: All products are 'FOR RESEARCH USE ONLY. NOT FOR USE IN DIAGNOSTIC OR THERAPEUTIC PROCEDURES'.