

BTNL8 Antibody (Center)

Affinity Purified Rabbit Polyclonal Antibody (Pab)

Catalog # AP5012c

Product Information

Application	WB, FC, E
Primary Accession	Q6UX41
Other Accession	Q6UXE8
Reactivity	Human
Host	Rabbit
Clonality	Polyclonal
Isotype	Rabbit IgG
Clone Names	RB22290
Calculated MW	56748
Antigen Region	257-285

Additional Information

Gene ID	79908
Other Names	Butyrophilin-like protein 8, BTNL8
Target/Specificity	This BTNL8 antibody is generated from rabbits immunized with a KLH conjugated synthetic peptide between 257-285 amino acids from the Central region of human BTNL8.
Dilution	WB~~1:1000 FC~~1:10~50 E~~Use at an assay dependent concentration.
Format	Purified polyclonal antibody supplied in PBS with 0.09% (W/V) sodium azide. This antibody is purified through a protein A column, followed by peptide affinity purification.
Storage	Maintain refrigerated at 2-8°C for up to 2 weeks. For long term storage store at -20°C in small aliquots to prevent freeze-thaw cycles.
Precautions	BTNL8 Antibody (Center) is for research use only and not for use in diagnostic or therapeutic procedures.

Protein Information

Name	BTNL8
Function	May stimulate primary immune response. Acts on T-cell stimulated sub-optimally through the TCR/CD3 complex stimulating their proliferation and cytokine production.

Cellular Location

Membrane; Single-pass type I membrane protein

Tissue Location

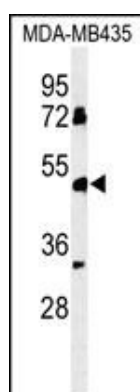
Expressed in neutrophils. Isoforms 1 and 5 are expressed at high levels in the colon, lung, testis, lymph nodes and thyroid tissue. Isoform 5, but not isoform 1, is detected in spleen

References

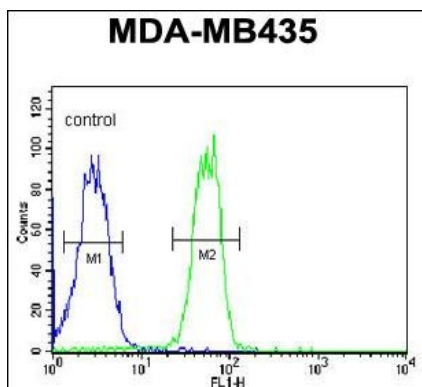
Kimura, K., et al. Genome Res. 16(1):55-65(2006)

Strausberg, R.L., et al. Proc. Natl. Acad. Sci. U.S.A. 99(26):16899-16903(2002)

Images



Western blot analysis of BTNL8 Antibody (Center) (Cat. #AP5012c) in MDA-MB435 cell line lysates (35ug/lane). BTNL8 (arrow) was detected using the purified Pab.



BTNL8 Antibody (Center) (Cat. #AP5012c) flow cytometric analysis of MDA-MB435 cells (right histogram) compared to a negative control cell (left histogram). FITC-conjugated goat-anti-rabbit secondary antibodies were used for the analysis.

Please note: All products are 'FOR RESEARCH USE ONLY. NOT FOR USE IN DIAGNOSTIC OR THERAPEUTIC PROCEDURES'.