

PDLIM1 Antibody

Purified Rabbit Polyclonal Antibody (Pab)

Catalog # AP50197

Product Information

Application	WB, IF, IHC
Primary Accession	O00151
Reactivity	Human, Mouse, Rat
Host	Rabbit
Clonality	polyclonal
Calculated MW	36072

Additional Information

Gene ID	9124
Other Names	PDZ and LIM domain protein 1, C-terminal LIM domain protein 1, Elfin, LIM domain protein CLP-36, PDLIM1, CLIM1, CLP36
Dilution	WB~~ 1:1000 IF~~1:100 IHC~~1:50-1:100
Format	Rabbit IgG in phosphate buffered saline (without Mg2+ and Ca2+), pH 7.4, 150mM NaCl, 0.09% (W/V) sodium azide and 50% glycerol.
Storage Conditions	-20°C

Protein Information

Name	PDLIM1
Synonyms	CLIM1, CLP36
Function	Cytoskeletal protein that may act as an adapter that brings other proteins (like kinases) to the cytoskeleton (PubMed: 10861853). Involved in assembly, disassembly and directioning of stress fibers in fibroblasts. Required for the localization of ACTN1 and PALLD to stress fibers. Required for cell migration and in maintaining cell polarity of fibroblasts (By similarity).
Cellular Location	Cytoplasm. Cytoplasm, cytoskeleton. Cytoplasm, myofibril, sarcomere, Z line Note=Associates with actin stress fibers
Tissue Location	Strongly expressed in the heart and skeletal muscle, moderately expressed in the spleen, small intestine, colon, placenta, and lung. A lower level expression is seen in liver, thymus, kidney, prostate and pancreas and is not found in the brain, testis, ovary, and peripheral blood leukocytes

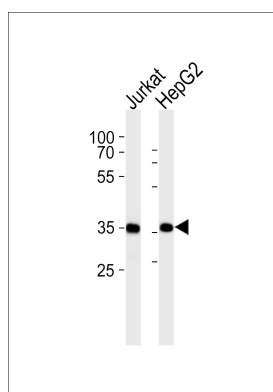
Background

Cytoskeletal protein that may act as an adapter that brings other proteins (like kinases) to the cytoskeleton.

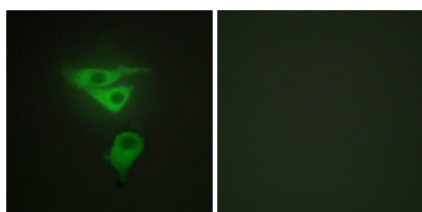
References

Kotaka M.,et al.J. Cell. Biochem. 72:279-285(1999).
Bauer K.,et al.Blood 96:4236-4245(2000).
Ota T.,et al.Nat. Genet. 36:40-45(2004).
Deloukas P.,et al.Nature 429:375-381(2004).
Gevaert K.,et al.Nat. Biotechnol. 21:566-569(2003).

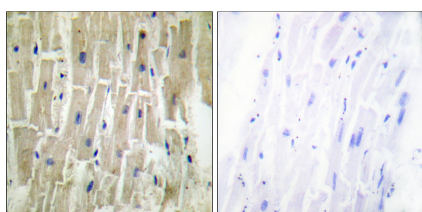
Images



Western blot analysis of lysates from Jurkat,HepG2 cell line (from left to right),using PDLIM1 Antibody(C10012). C10012 was diluted at 1:1000 at each lane. A goat anti-rabbit IgG H&L(HRP) at 1:5000 dilution was used as the secondary antibody.Lysates at 35ug per lane.



Immunofluorescence analysis of HepG2 cells, using PDLIM1 antibody.



Immunohistochemistry analysis of paraffin-embedded human heart tissue using PDLIM1 antibody.

Please note: All products are 'FOR RESEARCH USE ONLY. NOT FOR USE IN DIAGNOSTIC OR THERAPEUTIC PROCEDURES'.