

CCDC42 Antibody (Center)

Affinity Purified Rabbit Polyclonal Antibody (Pab)

Catalog # AP5019c

Product Information

Application	WB, IHC-P, E
Primary Accession	Q96M95
Reactivity	Human, Mouse
Host	Rabbit
Clonality	Polyclonal
Isotype	Rabbit IgG
Clone Names	RB25993
Calculated MW	38019
Antigen Region	121-150

Additional Information

Gene ID	146849
Other Names	Coiled-coil domain-containing protein 42A, CCDC42, CCDC42A
Target/Specificity	This CCDC42 antibody is generated from rabbits immunized with a KLH conjugated synthetic peptide between 121-150 amino acids from the Central region of human CCDC42.
Dilution	WB~~1:1000 IHC-P~~1:100~500 E~~Use at an assay dependent concentration.
Format	Purified polyclonal antibody supplied in PBS with 0.09% (W/V) sodium azide. This antibody is purified through a protein A column, followed by peptide affinity purification.
Storage	Maintain refrigerated at 2-8°C for up to 2 weeks. For long term storage store at -20°C in small aliquots to prevent freeze-thaw cycles.
Precautions	CCDC42 Antibody (Center) is for research use only and not for use in diagnostic or therapeutic procedures.

Protein Information

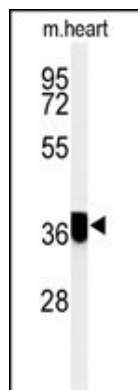
Name	CCDC42 (HGNC:26528)
Function	Essential for male fertility. Required for sperm development.
Cellular Location	Cytoplasm, perinuclear region {ECO:0000250 UniProtKB:Q5SV66}. Cytoplasm, cytoskeleton {ECO:0000250 UniProtKB:Q5SV66}. Cell projection, cilium, flagellum {ECO:0000250 UniProtKB:Q5SV66}. Cytoplasm, cytoskeleton,

microtubule organizing center, centrosome
{ECO:0000250|UniProtKB:Q5SV66} Note=Weakly expressed in the cytoplasm of round spermatids. In elongating spermatids, localizes to the manchette microtubules and the perinuclear ring. In the sperm flagellum, strongly expressed in the principle piece and also located to the connecting piece and weakly to the midpiece. Localizes to the centrosome in somatic cells
{ECO:0000250|UniProtKB:Q5SV66}

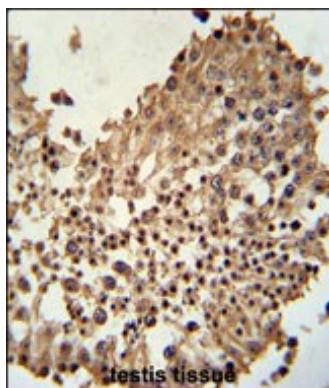
References

Rual, J.F., et al. Genome Res. 14 (10B), 2128-2135 (2004)

Images



Western blot analysis of CCDC42 Antibody (Center) (Cat. #AP5019c) in mouse heart tissue lysates (35ug/lane).CCDC42 (arrow) was detected using the purified Pab.



CCDC42 Antibody (Center) (Cat. #AP5019c) immunohistochemistry analysis in formalin fixed and paraffin embedded human testis tissue followed by peroxidase conjugation of the secondary antibody and DAB staining. This data demonstrates the use of the CCDC42 Antibody (Center) for immunohistochemistry. Clinical relevance has not been evaluated.

Please note: All products are 'FOR RESEARCH USE ONLY. NOT FOR USE IN DIAGNOSTIC OR THERAPEUTIC PROCEDURES'.