

SART1 Antibody

Purified Rabbit Polyclonal Antibody (Pab)

Catalog # AP50203

Product Information

Application	WB
Primary Accession	O43290
Reactivity	Human, Mouse, Rat
Host	Rabbit
Clonality	polyclonal
Calculated MW	90255

Additional Information

Gene ID	9092
Other Names	U4/U6U5 tri-snRNP-associated protein 1, SNU66 homolog, hSnu66, Squamous cell carcinoma antigen recognized by T-cells 1, SART-1, hSART-1, U4/U6U5 tri-snRNP-associated 110 kDa protein, Hom s 1, SART1
Dilution	WB~~ 1:1000
Format	Rabbit IgG in phosphate buffered saline (without Mg2+ and Ca2+), pH 7.4, 150mM NaCl, 0.09% (W/V) sodium azide and 50% glycerol.
Storage Conditions	-20°C

Protein Information

Name	SART1
Function	Plays a role in mRNA splicing as a component of the U4/U6-U5 tri-snRNP, one of the building blocks of the spliceosome. May also bind to DNA.
Cellular Location	Nucleus. Note=Found in the nucleus of mitogen- activated peripheral blood mononuclear cells (PBMCs), tumor cells, or normal cell lines, but not in normal tissues except testis and fetal liver or in unstimulated PBMCs, suggesting preferential expression in proliferating cells
Tissue Location	Ubiquitously expressed.

Background

Plays a role in mRNA splicing as a component of the U4/U6-U5 tri-snRNP, one of the building blocks of the spliceosome. May also bind to DNA.

References

Shichijo S.,et al.J. Exp. Med. 187:277-288(1998).

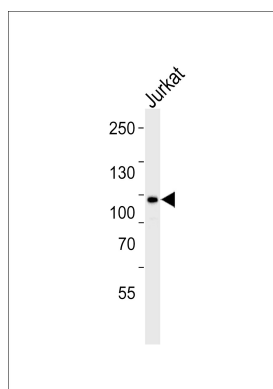
Makarova O.V.,et al.EMBO J. 20:2553-2563(2001).

Kalnina N.,et al.Submitted (MAY-2003) to the EMBL/GenBank/DDBJ databases.

Suzuki Y.,et al.Submitted (APR-2005) to the EMBL/GenBank/DDBJ databases.

Taylor T.D.,et al.Nature 440:497-500(2006).

Images



Western blot analysis of lysate from Jurkat cell line,using SART1 Antibody(C19348). C19348 was diluted at 1:1000. A goat anti-rabbit IgG H&L(HRP) at 1:5000 dilution was used as the secondary antibody.Lysate at 35ug.

Please note: All products are 'FOR RESEARCH USE ONLY. NOT FOR USE IN DIAGNOSTIC OR THERAPEUTIC PROCEDURES'.