

TTF2 Antibody

Purified Rabbit Polyclonal Antibody (Pab)

Catalog # AP50207

Product Information

Application	WB
Primary Accession	O00358
Reactivity	Human, Mouse, Rat
Host	Rabbit
Clonality	polyclonal
Calculated MW	38076

Additional Information

Gene ID	2304
Other Names	Forkhead box protein E1, Forkhead box protein E2, Forkhead-related protein FKHL15, HFKH4, HNF-3/fork head-like protein 5, HFKL5, Thyroid transcription factor 2, TTF-2, FOXE1, FKHL15, FOXE2, TITF2, TTF2
Dilution	WB~~1:500-1:1000
Format	Rabbit IgG in phosphate buffered saline (without Mg2+ and Ca2+), pH 7.4, 150mM NaCl, 0.09% (W/V) sodium azide and 50% glycerol.
Storage Conditions	-20°C

Protein Information

Name	FOXE1
Synonyms	FKHL15, FOXE2, TITF2, TTF2
Function	Transcription factor that binds consensus sites on a variety of gene promoters and activate their transcription. Involved in proper palate formation, most probably through the expression of MSX1 and TGFB3 genes which are direct targets of this transcription factor. Also implicated in thyroid gland morphogenesis. May indirectly play a role in cell growth and migration through the regulation of WNT5A expression.
Cellular Location	Nucleus.
Tissue Location	Detected in adult brain, placenta, lung, liver, skeletal muscle, kidney, pancreas, heart, colon, small intestine testis and thymus. Expression was strongest in heart and pancreas

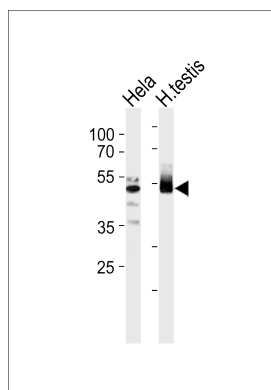
Background

Probable transcription factor. Could be involved in thyroid gland organogenesis.

References

Wiese S.,et al.DNA Cell Biol. 16:165-171(1997).
Chadwick B.P.,et al.Genomics 41:390-396(1997).
Macchia P.E.,et al.Biochimie 81:433-440(1999).
Humphray S.J.,et al.Nature 429:369-374(2004).
Mural R.J.,et al.Submitted (JUL-2005) to the EMBL/GenBank/DDBJ databases.

Images



Western blot analysis of lysates from HeLa cell line and human testis tissue lysate(from left to right),using TTF2 Antibody(C10022). C10022 was diluted at 1:1000 at each lane. A goat anti-rabbit IgG H&L(HRP) at 1:5000 dilution was used as the secondary antibody.Lysates at 35ug per lane.

Please note: All products are 'FOR RESEARCH USE ONLY. NOT FOR USE IN DIAGNOSTIC OR THERAPEUTIC PROCEDURES'.