

# GIT2 Antibody

Purified Rabbit Polyclonal Antibody (Pab)  
Catalog # AP50209

## Product Information

---

<b>Application</b>	WB
<b>Primary Accession</b>	<a href="#">Q14161</a>
<b>Reactivity</b>	Human, Mouse, Rat
<b>Host</b>	Rabbit
<b>Clonality</b>	polyclonal
<b>Calculated MW</b>	84543

## Additional Information

---

<b>Gene ID</b>	9815
<b>Other Names</b>	ARF GTPase-activating protein GIT2, ARF GAP GIT2, Cool-interacting tyrosine-phosphorylated protein 2, CAT-2, CAT2, G protein-coupled receptor kinase-interactor 2, GRK-interacting protein 2, GIT2, KIAA0148
<b>Dilution</b>	WB~~ 1:1000
<b>Format</b>	Rabbit IgG in phosphate buffered saline (without Mg <sup>2+</sup> and Ca <sup>2+</sup> ), pH 7.4, 150mM NaCl, 0.09% (W/V) sodium azide and 50% glycerol.
<b>Storage Conditions</b>	-20°C

## Protein Information

---

<b>Name</b>	GIT2
<b>Synonyms</b>	KIAA0148
<b>Function</b>	GTPase-activating protein for ADP ribosylation factor family members, including ARF1.

## Background

---

GTPase-activating protein for the ADP ribosylation factor family.

## References

---

Premont R.T., et al. J. Biol. Chem. 275:22373-22380(2000).  
Nagase T., et al. DNA Res. 2:167-174(1995).

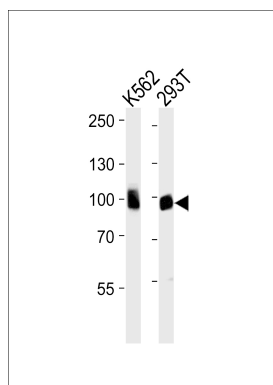
Nakajima D.,et al.DNA Res. 9:99-106(2002).

Kalnina N.,et al.Submitted (MAY-2003) to the EMBL/GenBank/DDBJ databases.

Mazaki Y.,et al.Mol. Biol. Cell 12:645-662(2001).

## Images

---



Western blot analysis of lysates from K562,293T cell line (from left to right),using GIT2 Antibody(C11019). C11019 was diluted at 1:1000 at each lane. A goat anti-rabbit IgG H&L(HRP) at 1:5000 dilution was used as the secondary antibody.Lysates at 35ug per lane.

Please note: All products are 'FOR RESEARCH USE ONLY. NOT FOR USE IN DIAGNOSTIC OR THERAPEUTIC PROCEDURES'.