

AKAP1 Antibody

Purified Rabbit Polyclonal Antibody (Pab)

Catalog # AP50210

Product Information

Application	WB, IF
Primary Accession	Q92667
Reactivity	Human
Host	Rabbit
Clonality	polyclonal
Calculated MW	97342

Additional Information

Gene ID	8165
Other Names	A-kinase anchor protein 1, mitochondrial, A-kinase anchor protein 149 kDa, AKAP 149, Dual specificity A-kinase-anchoring protein 1, D-AKAP-1, Protein kinase A-anchoring protein 1, PRKA1, Spermatid A-kinase anchor protein 84, S-AKAP84, AKAP1, AKAP149, PRKA1
Dilution	WB~~ 1:1000 IF~~1:100
Format	Rabbit IgG in phosphate buffered saline (without Mg ²⁺ and Ca ²⁺), pH 7.4, 150mM NaCl, 0.09% (W/V) sodium azide and 50% glycerol.
Storage Conditions	-20°C

Protein Information

Name	AKAP1 (HGNC:367)
Synonyms	AKAP149, PRKA1
Function	Binds to type I and II regulatory subunits of protein kinase A and anchors them to the cytoplasmic face of the mitochondrial outer membrane (By similarity). Involved in mitochondrial-mediated antiviral innate immunity (PubMed: 31522117). Promotes translocation of NDUFS1 into mitochondria to regulate mitochondrial membrane respiratory chain NADH dehydrogenase (Complex I) activity (By similarity).
Cellular Location	Mitochondrion outer membrane {ECO:0000250 UniProtKB:O08715}. Mitochondrion {ECO:0000250 UniProtKB:O08715}
Tissue Location	Isoform 1 is detected in thymus, prostate, testis, ovary, colon and small intestine (PubMed:8769136). Isoform 2 is highly expressed in testis and detected at much lower levels in kidney, pancreas, liver, lung and brain

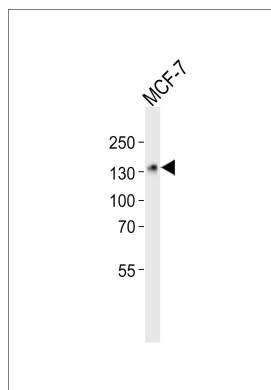
Background

Binds to type I and II regulatory subunits of protein kinase A and anchors them to the cytoplasmic face of the mitochondrial outer membrane.

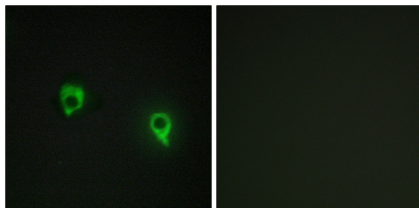
References

Trendelenburg G.,et al.Biochem. Biophys. Res. Commun. 225:313-319(1996).
Lin R.-Y.,et al.J. Biol. Chem. 270:27804-27811(1995).
Ota T.,et al.Nat. Genet. 36:40-45(2004).
Mural R.J.,et al.Submitted (SEP-2005) to the EMBL/GenBank/DDBJ databases.
Hillman R.T.,et al.Genome Biol. 5:R8.1-R8.16(2004).

Images



Western blot analysis of lysate from MCF-7 cell line,using AKAP1 Antibody(C11427). C11427 was diluted at 1:1000. A goat anti-rabbit IgG H&L(HRP) at 1:5000 dilution was used as the secondary antibody.Lysate at 35ug.



Immunofluorescence analysis of COS7 cells, using AKAP1 antibody.

Please note: All products are 'FOR RESEARCH USE ONLY. NOT FOR USE IN DIAGNOSTIC OR THERAPEUTIC PROCEDURES'.