

GPR52 Antibody

Purified Rabbit Polyclonal Antibody (Pab)

Catalog # AP50214

Product Information

Application	WB
Primary Accession	Q9Y2T5
Reactivity	Human
Host	Rabbit
Clonality	polyclonal
Calculated MW	41354

Additional Information

Gene ID	9293
Other Names	Probable G-protein coupled receptor 52, GPR52
Dilution	WB~~ 1:1000
Format	Rabbit IgG in phosphate buffered saline (without Mg2+ and Ca2+), pH 7.4, 150mM NaCl, 0.09% (W/V) sodium azide and 50% glycerol.
Storage Conditions	-20°C

Protein Information

Name	GPR52 {ECO:0000303 PubMed:9931487, ECO:0000312 HGNC:HGNC:4508}
Function	Gs-coupled receptor activated by antipsychotics reserpine leading to an increase in intracellular cAMP and its internalization (PubMed: 24587241). May play a role in locomotor activity through modulation of dopamine, NMDA and ADORA2A-induced locomotor activity. These behavioral changes are accompanied by modulation of the dopamine receptor signaling pathway in striatum (PubMed: 24587241). Modulates HTT level via cAMP-dependent but PKA independent mechanisms through activation of RAB39B that translocates HTT to the endoplasmic reticulum, thus avoiding proteasome degradation (PubMed: 25738228).
Cellular Location	Cell membrane; Multi-pass membrane protein.
Tissue Location	Expressed in brain, especially in striatum.

Background

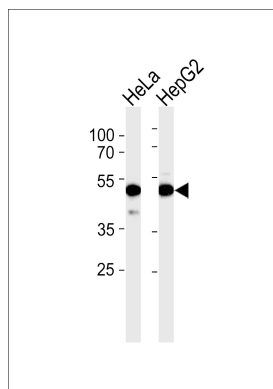
Orphan receptor.

References

Sawzdargo M.,et al.Brain Res. Mol. Brain Res. 64:193-198(1999).

Gregory S.G.,et al.Nature 441:315-321(2006).

Images



Western blot analysis of lysates from HeLa, HepG2 cell line (from left to right),using GPR52 Antibody(G344). G344 was diluted at 1:1000 at each lane. A goat anti-rabbit IgG H&L(HRP) at 1:5000 dilution was used as the secondary antibody.Lysates at 35ug per lane.

Please note: All products are 'FOR RESEARCH USE ONLY. NOT FOR USE IN DIAGNOSTIC OR THERAPEUTIC PROCEDURES'.