

# NXF1 Antibody

Purified Rabbit Polyclonal Antibody (Pab)

Catalog # AP50580

## Product Information

---

Application	WB
Primary Accession	<a href="#">Q9UBU9</a>
Reactivity	Human
Host	Rabbit
Clonality	polyclonal
Calculated MW	70182

## Additional Information

---

Gene ID	10482
Other Names	Nuclear RNA export factor 1, Tip-associated protein, Tip-associating protein, mRNA export factor TAP, NXF1, TAP
Dilution	WB~~ 1:1000
Format	Rabbit IgG in phosphate buffered saline (without Mg2+ and Ca2+), pH 7.4, 150mM NaCl, 0.09% (W/V) sodium azide and 50% glycerol.
Storage Conditions	-20°C

## Protein Information

---

Name	NXF1
Synonyms	TAP
Function	<p>Involved in the nuclear export of mRNA species bearing retroviral constitutive transport elements (CTE) and in the export of mRNA from the nucleus to the cytoplasm (TAP/NFX1 pathway) (PubMed:<a href="#">10924507</a>). The NXF1-NXT1 heterodimer is involved in the export of HSP70 mRNA in conjunction with ALYREF/THOC4 and THOC5 components of the TREX complex (PubMed:<a href="#">18364396</a>, PubMed:<a href="#">19165146</a>, PubMed:<a href="#">9660949</a>).</p> <p>ALYREF/THOC4-bound mRNA is thought to be transferred to the NXF1-NXT1 heterodimer for export (PubMed:<a href="#">18364396</a>, PubMed:<a href="#">19165146</a>, PubMed:<a href="#">9660949</a>). Also involved in nuclear export of m6A-containing mRNAs: interaction between SRSF3 and YTHDC1 facilitates m6A-containing mRNA-binding to both SRSF3 and NXF1, promoting mRNA nuclear export (PubMed:<a href="#">28984244</a>).</p>
Cellular Location	Nucleus. Nucleus, nucleoplasm Nucleus speckle. Nucleus, nuclear pore complex. Nucleus envelope. Cytoplasm. Cytoplasm, Stress granule.

Note=Localized predominantly in the nucleoplasm and at both the nucleoplasmic and cytoplasmic faces of the nuclear pore complex. Shuttles between the nucleus and the cytoplasm. Travels to the cytoplasm as part of the exon junction complex (EJC) bound to mRNA. The association with the TREX complex seems to occur in regions surrounding nuclear speckles known as perispeckles (PubMed:23826332). Nucleus; nuclear rim (PubMed:25662211)

**Tissue Location** Expressed ubiquitously.

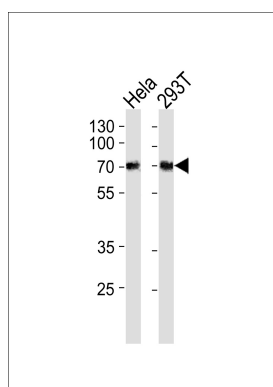
## Background

Involved in the nuclear export of mRNA species bearing retroviral constitutive transport elements (CTE) and in the export of mRNA from the nucleus to the cytoplasm (TAP/NFX1 pathway). The NXF1-NXT1 heterodimer is involved in the export of HSP70 mRNA in conjunction with ALYREF/THOC4 and THOC5 components of the TREX complex. ALYREF/THOC4-bound mRNA is thought to be transferred to the NXF1-NXT1 heterodimer for export.

## References

Braun I.C.,et al.EMBO J. 18:1953-1965(1999).  
Kang Y.,et al.Genes Dev. 13:1126-1139(1999).  
Bear J.,et al.Mol. Cell. Biol. 19:6306-6317(1999).  
Ota T.,et al.Nat. Genet. 36:40-45(2004).  
Taylor T.D.,et al.Nature 440:497-500(2006).

## Images



Western blot analysis of lysates from HeLa,293T cell line (from left to right),using NXF1 Antibody(AP50580). AP50580 was diluted at 1:1000 at each lane. A goat anti-rabbit IgG H&L(HRP) at 1:5000 dilution was used as the secondary antibody.Lysates at 35ug per lane.

Please note: All products are 'FOR RESEARCH USE ONLY. NOT FOR USE IN DIAGNOSTIC OR THERAPEUTIC PROCEDURES'.