

RAB7L1 Antibody

Purified Rabbit Polyclonal Antibody (Pab)

Catalog # AP50582

Product Information

Application	WB
Primary Accession	O14966
Reactivity	Human, Mouse, Rat
Host	Rabbit
Clonality	polyclonal
Calculated MW	23155

Additional Information

Gene ID	8934
Other Names	Ras-related protein Rab-7L1, Rab-7-like protein 1, Ras-related protein Rab-29, RAB29, RAB7L1
Dilution	WB~~ 1:1000
Format	Rabbit IgG in phosphate buffered saline (without Mg2+ and Ca2+), pH 7.4, 150mM NaCl, 0.09% (W/V) sodium azide and 50% glycerol.
Storage Conditions	-20°C

Protein Information

Name	RAB29
Synonyms	RAB7L1
Function	<p>The small GTPases Rab are key regulators in vesicle trafficking (PubMed:24788816). Essential for maintaining the integrity of the endosome-trans-Golgi network structure (By similarity). Together with LRRK2, plays a role in the retrograde trafficking pathway for recycling proteins, such as mannose 6 phosphate receptor (M6PR), between lysosomes and the Golgi apparatus in a retromer-dependent manner (PubMed:24788816). Recruits LRRK2 to the Golgi complex and stimulates LRRK2 kinase activity (PubMed:29212815, PubMed:38127736). Stimulates phosphorylation of RAB10 'Thr-73' by LRRK2 (PubMed:38127736). Regulates neuronal process morphology in the intact central nervous system (CNS) (By similarity). May play a role in the formation of typhoid toxin transport intermediates during Salmonella enterica serovar Typhi (S.typhi) epithelial cell infection (PubMed:22042847).</p>
Cellular Location	Cell membrane; Lipid-anchor; Cytoplasmic side. Cytoplasm. Cytoplasm,

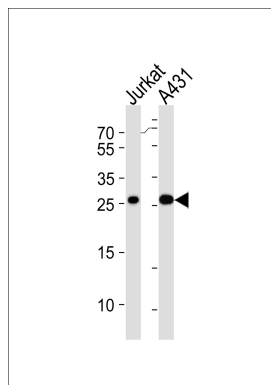
perinuclear region. Golgi apparatus. Golgi apparatus membrane. Golgi apparatus, trans-Golgi network. Vacuole. Cytoplasm, cytoskeleton.
Note=Colocalizes with LRRK2 along tubular structures emerging from Golgi apparatus (PubMed:29212815) Colocalizes with GM130 at the Golgi apparatus (PubMed:22042847) Colocalizes with dynamic tubules emerging from and retracting to the Golgi apparatus (PubMed:22042847, PubMed:38127736). Colocalizes with TGN46 at the trans-Golgi network (TGN) (PubMed:24788816). In *Salmonella enterica* serovar Typhi (S.typhi) infected epithelial cells, is recruited and colocalized with both S.typhi-containing vacuoles and dynamic tubules as well as those emerging from the vacuole toward the cell periphery (PubMed:22042847).

Tissue Location Ubiquitous..

References

Shimizu F.,et al.Cytogenet. Cell Genet. 77:261-263(1997).
Ota T.,et al.Nat. Genet. 36:40-45(2004).
Gregory S.G.,et al.Nature 441:315-321(2006).
Dephoure N.,et al.Proc. Natl. Acad. Sci. U.S.A. 105:10762-10767(2008).
Olsen J.V.,et al.Sci. Signal. 3:RA3-RA3(2010).

Images



Western blot analysis of lysates from Jurkat,A431 cell line (from left to right),using RAB7L1 Antibody(AP50582). AP50582 was diluted at 1:1000 at each lane. A goat anti-rabbit IgG H&L(HRP) at 1:5000 dilution was used as the secondary antibody.Lysates at 35ug per lane.

Please note: All products are 'FOR RESEARCH USE ONLY. NOT FOR USE IN DIAGNOSTIC OR THERAPEUTIC PROCEDURES'.