

ARC Antibody

Purified Rabbit Polyclonal Antibody (Pab)

Catalog # AP50583

Product Information

Application	WB, IHC
Primary Accession	O60936
Reactivity	Human, Mouse
Host	Rabbit
Clonality	polyclonal
Calculated MW	22629

Additional Information

Gene ID	8996
Other Names	Nucleolar protein 3, Apoptosis repressor with CARD, Muscle-enriched cytoplasmic protein, Myp, Nucleolar protein of 30 kDa, Nop30, NOL3, ARC, NOP
Dilution	WB~~ 1:1000 IHC~~1:50-1:100
Format	Rabbit IgG in phosphate buffered saline (without Mg2+ and Ca2+), pH 7.4, 150mM NaCl, 0.09% (W/V) sodium azide and 50% glycerol.
Storage Conditions	-20°C

Protein Information

Name	NOL3 (HGNC:7869)
Function	[Isoform 1]: May be involved in RNA splicing.
Cellular Location	[Isoform 1]: Nucleus, nucleolus. Note=The SR-rich C-terminus mediates nuclear localization. [Isoform 2]: Cytoplasm. Mitochondrion {ECO:0000250 UniProtKB:Q62881}. Sarcoplasmic reticulum {ECO:0000250 UniProtKB:Q62881}. Membrane; Lipid-anchor. Note=Phosphorylation at Thr-149 results in translocation to mitochondria. Colocalized with mitochondria in response to oxidative stress. {ECO:0000250 UniProtKB:Q62881}
Tissue Location	Highly expressed in heart and skeletal muscle. Detected at low levels in placenta, liver, kidney and pancreas

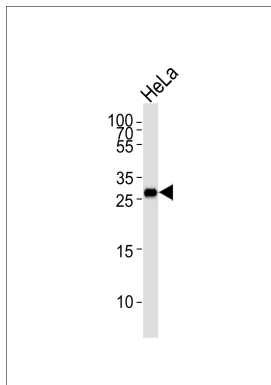
Background

Isoform 1 may be involved in RNA splicing.

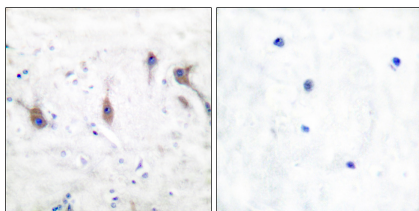
References

Koseki T.,et al.Proc. Natl. Acad. Sci. U.S.A. 95:5156-5160(1998).
Stoss O.,et al.J. Biol. Chem. 274:10951-10962(1999).
Russell J.F.,et al.Ann. Neurol. 72:175-183(2012).

Images



Western blot analysis of lysate from HeLa cell line,using ARC Antibody(AP50583). AP50583 was diluted at 1:1000. A goat anti-rabbit IgG H&L(HRP) at 1:5000 dilution was used as the secondary antibody.Lysate at 35ug.



Immunohistochemical analysis of paraffin-embedded human brain tissue using ARC antibody.

Please note: All products are 'FOR RESEARCH USE ONLY. NOT FOR USE IN DIAGNOSTIC OR THERAPEUTIC PROCEDURES'.