

SLC28A2 Antibody

Purified Rabbit Polyclonal Antibody (Pab)

Catalog # AP50592

Product Information

Application	WB, IHC
Primary Accession	O43868
Reactivity	Human, Rat
Host	Rabbit
Clonality	polyclonal
Calculated MW	71926

Additional Information

Gene ID	9153
Other Names	Sodium/nucleoside cotransporter 2, Concentrative nucleoside transporter 2, CNT 2, hCNT2, Na(+)/nucleoside cotransporter 2, Sodium-coupled nucleoside transporter 2, Sodium/purine nucleoside co-transporter, SPNT, Solute carrier family 28 member 2, SLC28A2, CNT2
Dilution	WB~~ 1:1000 IHC~~1:50-1:100
Format	Rabbit IgG in phosphate buffered saline (without Mg ²⁺ and Ca ²⁺), pH 7.4, 150mM NaCl, 0.09% (W/V) sodium azide and 50% glycerol.
Storage Conditions	-20°C

Protein Information

Name	SLC28A2
Synonyms	CNT2
Function	Sodium-dependent and purine-selective transporter (PubMed: 10087507 , PubMed: 9435697). Exhibits the transport characteristics of the nucleoside transport system cif or N1 subtype (N1/cif) (selective for purine nucleosides and uridine) (PubMed: 10087507 , PubMed: 21795683 , PubMed: 9435697). Plays a critical role in specific uptake and salvage of purine nucleosides in kidney and other tissues (PubMed: 9435697). May contribute to regulate the transport of organic compounds in testes across the blood-testis- barrier (Probable).
Cellular Location	Membrane; Multi-pass membrane protein. Apicolateral cell membrane; Multi-pass membrane protein. Note=Localized to the apicolateral membranes of Sertoli cells and vascular endothelial cells in testis

Tissue Location

Expressed in heart and skeletal muscle followed by liver, kidney, intestine, pancreas, placenta and brain (PubMed:9435697). Weak expression in lung (PubMed:9435697). In testis, primarily localized to the apicolateral membranes of Sertoli cells and vascular endothelial cells, and weakly expressed in Leydig cells, peritubular myoid cells and germ cells (PubMed:35307651)

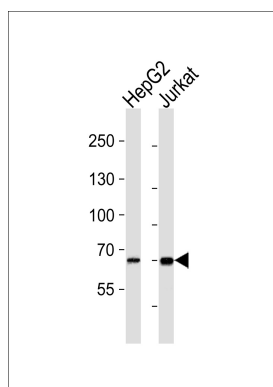
Background

Sodium-dependent and purine-selective transporter. Exhibits the transport characteristics of the nucleoside transport system cif or N1 subtype (N1/cif) (selective for purine nucleosides and uridine). Plays a critical role in specific uptake and salvage of purine nucleosides in kidney and other tissues.

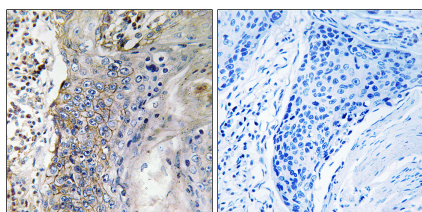
References

Wang J.,et al.Am. J. Physiol. 273:F1058-F1065(1997).
Ritzel M.W.L.,et al.Mol. Membr. Biol. 15:203-211(1998).
Ota T.,et al.Nat. Genet. 36:40-45(2004).
Loewen S.K.,et al.J. Biol. Chem. 274:24475-24484(1999).
Owen R.P.,et al.Pharmacogenet. Genomics 15:83-90(2005).

Images



Western blot analysis of lysates from HepG2, Jurkat cell line (from left to right), using SLC28A2 Antibody(AP50592). AP50592 was diluted at 1:1000 at each lane. A goat anti-rabbit IgG H&L(HRP) at 1:5000 dilution was used as the secondary antibody. Lysates at 35ug per lane.



Immunohistochemistry analysis of paraffin-embedded human lung carcinoma tissue, using SLC28A2 antibody.

Please note: All products are 'FOR RESEARCH USE ONLY. NOT FOR USE IN DIAGNOSTIC OR THERAPEUTIC PROCEDURES'.