

EIF2B3 Antibody

Purified Rabbit Polyclonal Antibody (Pab)

Catalog # AP50593

Product Information

Application	WB
Primary Accession	Q9NR50
Reactivity	Human, Mouse
Host	Rabbit
Clonality	polyclonal
Calculated MW	50240

Additional Information

Gene ID	8891
Other Names	Translation initiation factor eIF-2B subunit gamma, eIF-2B GDP-GTP exchange factor subunit gamma, EIF2B3
Dilution	WB~~ 1:1000
Format	Rabbit IgG in phosphate buffered saline (without Mg2+ and Ca2+), pH 7.4, 150mM NaCl, 0.09% (W/V) sodium azide and 50% glycerol.
Storage Conditions	-20°C

Protein Information

Name	EIF2B3
Function	Acts as a component of the translation initiation factor 2B (eIF2B) complex, which catalyzes the exchange of GDP for GTP on the eukaryotic initiation factor 2 (eIF2) complex gamma subunit (PubMed: 25858979 , PubMed: 27023709 , PubMed: 31048492). Its guanine nucleotide exchange factor activity is repressed when bound to eIF2 complex phosphorylated on the alpha subunit, thereby limiting the amount of methionyl-initiator methionine tRNA available to the ribosome and consequently global translation is repressed (PubMed: 25858979 , PubMed: 31048492).
Cellular Location	Cytoplasm, cytosol {ECO:0000250 UniProtKB:P56288}

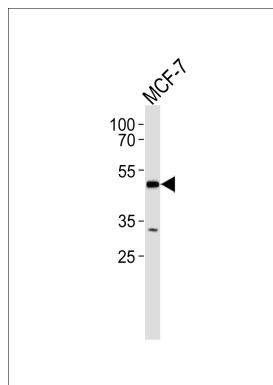
Background

Catalyzes the exchange of eukaryotic initiation factor 2-bound GDP for GTP.

References

Krueger M.,et al.Proc. Natl. Acad. Sci. U.S.A. 97:8566-8571(2000).
Ota T.,et al.Nat. Genet. 36:40-45(2004).
Bechtel S.,et al.BMC Genomics 8:399-399(2007).
Gregory S.G.,et al.Nature 441:315-321(2006).
Mural R.J.,et al.Submitted (SEP-2005) to the EMBL/GenBank/DDBJ databases.

Images



Western blot analysis of lysate from MCF-7 cell line,using EIF2B3 Antibody(AP50593). AP50593 was diluted at 1:1000. A goat anti-rabbit IgG H&L(HRP) at 1:5000 dilution was used as the secondary antibody.Lysate at 35ug.

Please note: All products are 'FOR RESEARCH USE ONLY. NOT FOR USE IN DIAGNOSTIC OR THERAPEUTIC PROCEDURES'.