

CATZ Antibody (Cleaved-Leu62)

Purified Rabbit Polyclonal Antibody (Pab)

Catalog # AP50595

Product Information

Application	WB
Primary Accession	Q9UBR2
Reactivity	Human
Host	Rabbit
Clonality	polyclonal
Calculated MW	33868

Additional Information

Gene ID	1522
Other Names	Cathepsin Z, Cathepsin P, Cathepsin X, CTSZ
Dilution	WB~~ 1:1000
Format	Rabbit IgG in phosphate buffered saline (without Mg ²⁺ and Ca ²⁺), pH 7.4, 150mM NaCl, 0.09% (W/V) sodium azide and 50% glycerol.
Storage Conditions	-20°C

Protein Information

Name	CTSZ
Function	Exhibits carboxy-monopeptidase as well as carboxy-dipeptidase activity (PubMed: 10504234). Capable of producing kinin potentiating peptides (By similarity).
Cellular Location	Lysosome.
Tissue Location	Widely expressed..

Background

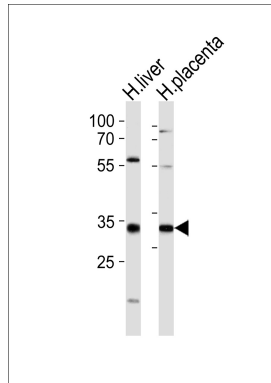
Exhibits carboxy-monopeptidase as well as carboxy- dipeptidase activity.

References

Naegler D.K.,et al.FEBS Lett. 434:135-139(1998).

Santamaria I.,et al.J. Biol. Chem. 273:16816-16823(1998).
Deussing J.,et al.Biochim. Biophys. Acta 1491:93-106(2000).
Ota T.,et al.Nat. Genet. 36:40-45(2004).
Deloukas P.,et al.Nature 414:865-871(2001).

Images



Western blot analysis of lysates from human liver and placenta tissue lysate (from left to right),using CATZ Antibody (Cleaved-Leu62)(AP50595). AP50595 was diluted at 1:1000 at each lane. A goat anti-rabbit IgG H&L(HRP) at 1:5000 dilution was used as the secondary antibody.Lysates at 35ug per lane.

Please note: All products are 'FOR RESEARCH USE ONLY. NOT FOR USE IN DIAGNOSTIC OR THERAPEUTIC PROCEDURES'.