

MRPL39 Antibody

Purified Rabbit Polyclonal Antibody (Pab)

Catalog # AP50596

Product Information

Application	WB, IHC
Primary Accession	Q9NYK5
Reactivity	Human, Mouse
Host	Rabbit
Clonality	polyclonal
Calculated MW	38712

Additional Information

Gene ID	54148
Other Names	39S ribosomal protein L39, mitochondrial, L39mt, MRP-L39, 39S ribosomal protein L5, mitochondrial, L5mt, MRP-L5, MRPL39, C21orf92, MRPL5, RPML5
Dilution	WB~~ 1:1000 IHC~~1:50-1:100
Format	Rabbit IgG in phosphate buffered saline (without Mg ²⁺ and Ca ²⁺), pH 7.4, 150mM NaCl, 0.09% (W/V) sodium azide and 50% glycerol.
Storage Conditions	-20°C

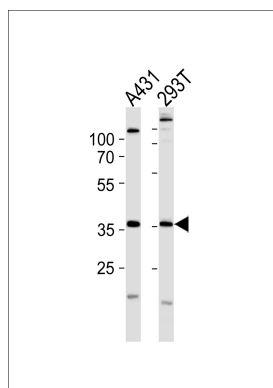
Protein Information

Name	MRPL39
Synonyms	C21orf92, MRPL5, RPML5
Cellular Location	Mitochondrion
Tissue Location	Isoform 1 is ubiquitously expressed. Isoform 2 is heart-specific

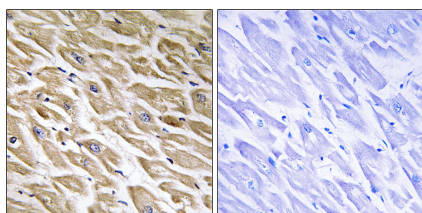
References

Choi D.K.,et al.Submitted (FEB-2000) to the EMBL/GenBank/DDBJ databases.
Ota T.,et al.Nat. Genet. 36:40-45(2004).
Hattori M.,et al.Nature 405:311-319(2000).
Hui R.T.,et al.Submitted (NOV-1998) to the EMBL/GenBank/DDBJ databases.
Spirina O.,et al.Gene 261:229-234(2000).

Images



Western blot analysis of lysates from A431,293T cell line (from left to right),using MRPL39 Antibody(AP50596). AP50596 was diluted at 1:1000 at each lane. A goat anti-rabbit IgG H&L(HRP) at 1:5000 dilution was used as the secondary antibody.Lysates at 35ug per lane.



Immunohistochemistry analysis of paraffin-embedded human heart tissue using MRPL39 antibody.

Please note: All products are 'FOR RESEARCH USE ONLY. NOT FOR USE IN DIAGNOSTIC OR THERAPEUTIC PROCEDURES'.