

CREBZF Antibody

Purified Rabbit Polyclonal Antibody (Pab)

Catalog # AP50597

Product Information

Application	WB, IF
Primary Accession	Q9NS37
Reactivity	Human, Mouse
Host	Rabbit
Clonality	polyclonal
Calculated MW	37134

Additional Information

Gene ID	58487
Other Names	CREB/ATF bZIP transcription factor, Host cell factor-binding transcription factor Zhangfei, HCF-binding transcription factor Zhangfei, CREBZF, ZF
Dilution	WB~~ 1:1000 IF~~1:100
Format	Rabbit IgG in phosphate buffered saline (without Mg2+ and Ca2+), pH 7.4, 150mM NaCl, 0.09% (W/V) sodium azide and 50% glycerol.
Storage Conditions	-20°C

Protein Information

Name	CREBZF
Synonyms	ZF
Function	Strongly activates transcription when bound to HCFC1. Suppresses the expression of HSV proteins in cells infected with the virus in a HCFC1-dependent manner. Also suppresses the HCFC1-dependent transcriptional activation by CREB3 and reduces the amount of CREB3 in the cell. Able to down-regulate expression of some cellular genes in CREBZF-expressing cells.
Cellular Location	Nucleus. Note=Colocalizes in promyelocytic leukemia protein nuclear bodies (PML- NB) with CREB3 and HCFC1
Tissue Location	In adults, expressed most abundantly in heart, liver and skeletal muscle, moderately abundant in kidney and pancreas, and barely detectable in lung. In fetal tissues, expressed most abundantly in kidney and very low amounts in heart, lung and liver

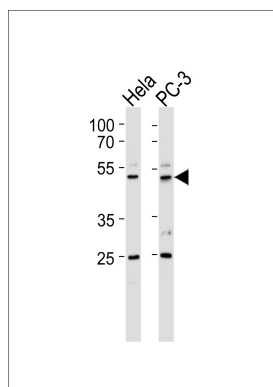
Background

Strongly activates transcription when bound to HCFC1. Suppresses the expression of HSV proteins in cells infected with the virus in a HCFC1-dependent manner. Also suppresses the HCFC1- dependent transcriptional activation by CREB3 and reduces the amount of CREB3 in the cell. Able to down-regulate expression of some cellular genes in CREBZF-expressing cells.

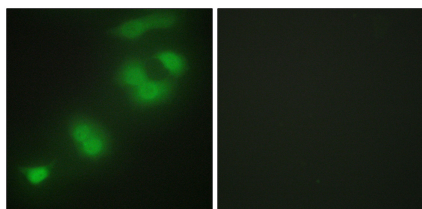
References

Lu R.,et al.Nucleic Acids Res. 28:2446-2454(2000).
Taylor T.D.,et al.Nature 440:497-500(2006).
Ota T.,et al.Nat. Genet. 36:40-45(2004).
Zhang J.W.,et al.Submitted (JUL-2005) to the EMBL/GenBank/DDBJ databases.
Misra V.,et al.J. Biol. Chem. 280:15257-15266(2005).

Images



Western blot analysis of lysates from HeLa,PC-3 cell line (from left to right),using CREBZF Antibody(AP50597). AP50597 was diluted at 1:1000 at each lane. A goat anti-rabbit IgG H&L(HRP) at 1:5000 dilution was used as the secondary antibody.Lysates at 35ug per lane.



Immunofluorescence analysis of HepG2 cells, using CREBZF antibody.

Please note: All products are 'FOR RESEARCH USE ONLY. NOT FOR USE IN DIAGNOSTIC OR THERAPEUTIC PROCEDURES'.