

ENDOGL1 Antibody

Purified Rabbit Polyclonal Antibody (Pab)

Catalog # AP50601

Product Information

Application	WB
Primary Accession	Q9Y2C4
Reactivity	Human
Host	Rabbit
Clonality	polyclonal
Calculated MW	41085

Additional Information

Gene ID	9941
Other Names	Nuclease EXOG, mitochondrial, 3130-, Endonuclease G-like 1, Endo G-like 1, EXOG, ENDOGL1, ENDOGL2, ENGL
Dilution	WB~~ 1:1000
Format	Rabbit IgG in phosphate buffered saline (without Mg2+ and Ca2+), pH 7.4, 150mM NaCl, 0.09% (W/V) sodium azide and 50% glycerol.
Storage Conditions	-20°C

Protein Information

Name	EXOG
Synonyms	ENDOGL1, ENDOGL2, ENGL
Function	Endo/exonuclease with nicking activity towards supercoiled DNA, a preference for single-stranded DNA and 5'-3' exonuclease activity.
Cellular Location	Mitochondrion inner membrane
Tissue Location	Ubiquitous.

Background

Endo/exonuclease with nicking activity towards supercoiled DNA, a preference for single-stranded DNA and 5'-3' exonuclease activity.

References

Daigo Y.,et al.DNA Res. 6:37-44(1999).

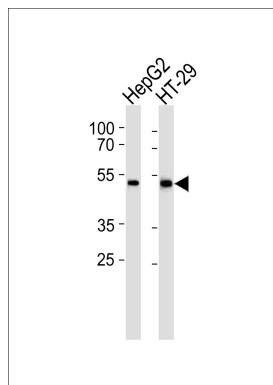
Ota T.,et al.Nat. Genet. 36:40-45(2004).

Mural R.J.,et al.Submitted (JUL-2005) to the EMBL/GenBank/DDBJ databases.

Cymerman I.A.,et al.Nucleic Acids Res. 36:1369-1379(2008).

Rigbolt K.T.,et al.Sci. Signal. 4:RS3-RS3(2011).

Images



Western blot analysis of lysates from HepG2,HT-29 cell line (from left to right),using ENDOGL1 Antibody(AP50601). AP50601 was diluted at 1:1000 at each lane. A goat anti-rabbit IgG H&L(HRP) at 1:5000 dilution was used as the secondary antibody.Lysates at 35ug per lane.

Please note: All products are 'FOR RESEARCH USE ONLY. NOT FOR USE IN DIAGNOSTIC OR THERAPEUTIC PROCEDURES'.