

# SERINC2 Antibody

Purified Rabbit Polyclonal Antibody (Pab)

Catalog # AP50605

## Product Information

---

|                          |                        |
|--------------------------|------------------------|
| <b>Application</b>       | WB, IF                 |
| <b>Primary Accession</b> | <a href="#">Q96SA4</a> |
| <b>Reactivity</b>        | Human, Mouse, Rat      |
| <b>Host</b>              | Rabbit                 |
| <b>Clonality</b>         | polyclonal             |
| <b>Calculated MW</b>     | 50742                  |

## Additional Information

---

|                           |   |
|---------------------------|---|
| <b>Gene ID</b>            | 347735  |
| <b>Other Names</b>        | Serine incorporator 2, Tumor differentially expressed protein 2-like, SERINC2, TDE2L  |
| <b>Dilution</b>           | WB~~ 1:1000 IF~~1:100   |
| <b>Format</b>             | Rabbit IgG in phosphate buffered saline (without Mg2+ and Ca2+), pH 7.4, 150mM NaCl, 0.09% (W/V) sodium azide and 50% glycerol. |
| <b>Storage Conditions</b> | -20°C   |

## Protein Information

---

|                          |   |
|--------------------------|---|
| <b>Name</b>              | SERINC2 ( <a href="#">HGNC:23231</a> )  |
| <b>Synonyms</b>          | TDE2L   |
| <b>Function</b>          | Non-ATP-dependent, non-specific lipid transporter for phosphatidylserine, phosphatidylcholine, and phosphatidylethanolamine. Functions as a scramblase that flips lipids in both directions across the membrane. In contrast to SERINC3 and SERINC5, has no effect on HIV- 1 particles infectivity. |
| <b>Cellular Location</b> | Cell membrane; Multi-pass membrane protein  |

## References

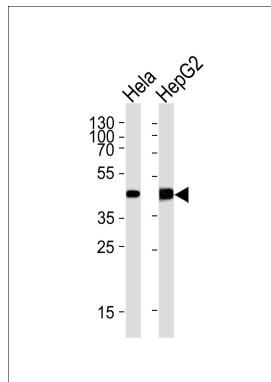
---

Wang Y.-G.,et al.Submitted (FEB-2001) to the EMBL/GenBank/DDBJ databases.  
Li N.,et al.Submitted (APR-2002) to the EMBL/GenBank/DDBJ databases.  
Clark H.F.,et al.Genome Res. 13:2265-2270(2003).

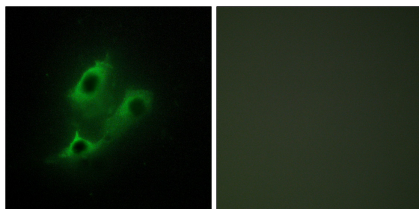
Ota T.,et al.Nat. Genet. 36:40-45(2004).  
Gregory S.G.,et al.Nature 441:315-321(2006).

## Images

---



Western blot analysis of lysates from HeLa,HepG2 cell line (from left to right),using SERINC2 Antibody(AP50605). AP50605 was diluted at 1:1000 at each lane. A goat anti-rabbit IgG H&L(HRP) at 1:5000 dilution was used as the secondary antibody.Lysates at 35ug per lane.



Immunofluorescence analysis of NIH/3T3 cells, using SERC2 antibody.

Please note: All products are 'FOR RESEARCH USE ONLY. NOT FOR USE IN DIAGNOSTIC OR THERAPEUTIC PROCEDURES'.