

SLK Antibody

Purified Rabbit Polyclonal Antibody (Pab)

Catalog # AP50609

Product Information

Application	WB, IF, IHC
Primary Accession	Q9H2G2
Reactivity	Human, Mouse, Rat
Host	Rabbit
Clonality	polyclonal
Calculated MW	142695

Additional Information

Gene ID	9748
Other Names	STE20-like serine/threonine-protein kinase, STE20-like kinase, hSLK, CTCL tumor antigen se20-9, STE20-related serine/threonine-protein kinase, STE20-related kinase, Serine/threonine-protein kinase 2, SLK, KIAA0204, STK2
Dilution	WB~~ 1:1000 IF~~1:100 IHC~~1:50-1:100
Format	Rabbit IgG in phosphate buffered saline (without Mg ²⁺ and Ca ²⁺), pH 7.4, 150mM NaCl, 0.09% (W/V) sodium azide and 50% glycerol.
Storage Conditions	-20°C

Protein Information

Name	SLK
Synonyms	KIAA0204, STK2
Function	Mediates apoptosis and actin stress fiber dissolution.
Cellular Location	Cytoplasm.
Tissue Location	Ubiquitously expressed. Highest expression is found in heart and in skeletal muscle.

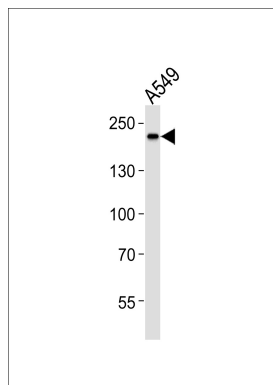
Background

Mediates apoptosis and actin stress fiber dissolution (By similarity).

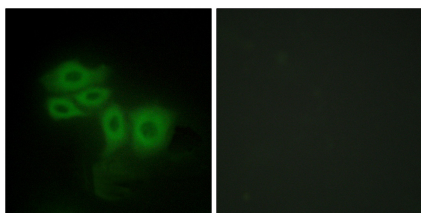
References

Yamada E.,et al.Biochim. Biophys. Acta 1495:250-262(2000).
Eichmueller S.,et al.Proc. Natl. Acad. Sci. U.S.A. 98:629-634(2001).
Nagase T.,et al.DNA Res. 3:321-329(1996).
Ohara O.,et al.Submitted (AUG-1996) to the EMBL/GenBank/DBJ databases.
Deloukas P.,et al.Nature 429:375-381(2004).

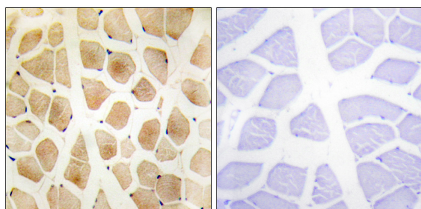
Images



Western blot analysis of lysate from A549 cell line, using SLK Antibody (AP50609). AP50609 was diluted at 1:1000. A goat anti-rabbit IgG H&L (HRP) at 1:5000 dilution was used as the secondary antibody. Lysate at 35 µg.



Immunofluorescence analysis of HepG2 cells, using SLK antibody.



Immunohistochemistry analysis of paraffin-embedded human skeletal muscle tissue using SLK antibody.

Please note: All products are 'FOR RESEARCH USE ONLY. NOT FOR USE IN DIAGNOSTIC OR THERAPEUTIC PROCEDURES'.