

DDX24 Antibody

Purified Rabbit Polyclonal Antibody (Pab)

Catalog # AP50610

Product Information

Application	WB, IHC
Primary Accession	Q9GZR7
Reactivity	Human
Host	Rabbit
Clonality	polyclonal
Calculated MW	96332

Additional Information

Gene ID	57062
Other Names	ATP-dependent RNA helicase DDX24, DEAD box protein 24, DDX24
Dilution	WB~~ 1:1000 IHC~~1:50-1:100
Format	Rabbit IgG in phosphate buffered saline (without Mg ²⁺ and Ca ²⁺), pH 7.4, 150mM NaCl, 0.09% (W/V) sodium azide and 50% glycerol.
Storage Conditions	-20°C

Protein Information

Name	DDX24
Function	ATP-dependent RNA helicase that plays a role in various aspects of RNA metabolism including pre-mRNA splicing and is thereby involved in different biological processes such as cell cycle regulation or innate immunity (PubMed: 24204270 , PubMed: 24980433). Plays an inhibitory role in TP53 transcriptional activity and subsequently in TP53 controlled cell growth arrest and senescence by inhibiting its EP300 mediated acetylation (PubMed: 25867071). Negatively regulates cytosolic RNA-mediated innate immune signaling at least in part by affecting RIPK1/IRF7 interactions. Alternatively, possesses antiviral activity by recognizing gammaherpesvirus transcripts in the context of lytic reactivation (PubMed: 36298642). Plays an essential role in cell cycle regulation in vascular smooth muscle cells by interacting with and regulating FANCA (Fanconi anemia complementation group A) mRNA (By similarity).
Cellular Location	Cytoplasm. Nucleus
Tissue Location	Ubiquitous. Most abundant in heart and brain, but with lowest levels in thymus and small intestine

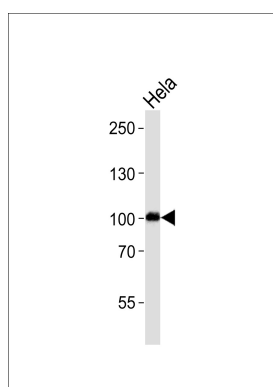
Background

ATP-dependent RNA helicase (Potential).

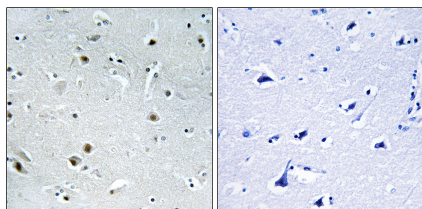
References

Zhao Y.,et al.Genomics 67:351-355(2000).
Wiemann S.,et al.Genome Res. 11:422-435(2001).
Ota T.,et al.Nat. Genet. 36:40-45(2004).
Olsen J.V.,et al.Cell 127:635-648(2006).
Beausoleil S.A.,et al.Nat. Biotechnol. 24:1285-1292(2006).

Images



Western blot analysis of lysate from HeLa cell line,using DDX24 Antibody(AP50610). AP50610 was diluted at 1:1000. A goat anti-rabbit IgG H&L(HRP) at 1:5000 dilution was used as the secondary antibody.Lysate at 35ug.



Immunohistochemistry analysis of paraffin-embedded human brain tissue using DDX24 antibody.

Please note: All products are 'FOR RESEARCH USE ONLY. NOT FOR USE IN DIAGNOSTIC OR THERAPEUTIC PROCEDURES'.