

# CSTF2T Antibody

Purified Rabbit Polyclonal Antibody (Pab)

Catalog # AP50611

## Product Information

---

<b>Application</b>	WB
<b>Primary Accession</b>	<a href="#">Q9H0L4</a>
<b>Reactivity</b>	Human, Mouse, Rat
<b>Host</b>	Rabbit
<b>Clonality</b>	polyclonal
<b>Calculated MW</b>	64437

## Additional Information

---

<b>Gene ID</b>	23283
<b>Other Names</b>	Cleavage stimulation factor subunit 2 tau variant, CF-1 64 kDa subunit tau variant, Cleavage stimulation factor 64 kDa subunit tau variant, CSTF 64 kDa subunit tau variant, TauCstF-64, CSTF2T, KIAA0689
<b>Dilution</b>	WB~~ 1:1000
<b>Format</b>	Rabbit IgG in phosphate buffered saline (without Mg <sup>2+</sup> and Ca <sup>2+</sup> ), pH 7.4, 150mM NaCl, 0.09% (W/V) sodium azide and 50% glycerol.
<b>Storage Conditions</b>	-20°C

## Protein Information

---

<b>Name</b>	CSTF2T
<b>Synonyms</b>	KIAA0689
<b>Function</b>	May play a significant role in AAUAAA-independent mRNA polyadenylation in germ cells. Directly involved in the binding to pre- mRNAs (By similarity).
<b>Cellular Location</b>	Nucleus.

## Background

---

May play a significant role in AAUAAA-independent mRNA polyadenylation in germ cells. Directly involved in the binding to pre-mRNAs (By similarity).

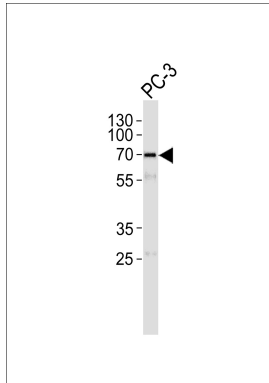
## References

---

Dass B.,et al.Genomics 80:509-514(2002).  
Wiemann S.,et al.Genome Res. 11:422-435(2001).  
Ota T.,et al.Nat. Genet. 36:40-45(2004).  
Suzuki Y.,et al.Submitted (APR-2005) to the EMBL/GenBank/DDBJ databases.  
Mural R.J.,et al.Submitted (JUL-2005) to the EMBL/GenBank/DDBJ databases.

## Images

---



Western blot analysis of lysate from PC-3 cell line,using CSTF2T Antibody(AP50611). AP50611 was diluted at 1:1000. A goat anti-rabbit IgG H&L(HRP) at 1:5000 dilution was used as the secondary antibody.Lysate at 35ug.

Please note: All products are 'FOR RESEARCH USE ONLY. NOT FOR USE IN DIAGNOSTIC OR THERAPEUTIC PROCEDURES'.