

# CLCC1 Antibody

Purified Rabbit Polyclonal Antibody (Pab)

Catalog # AP50622

## Product Information

Application	WB
Primary Accession	<a href="#">Q96S66</a>
Reactivity	Human
Host	Rabbit
Clonality	polyclonal
Calculated MW	62023

## Additional Information

Gene ID	23155
Other Names	Chloride channel CLIC-like protein 1, Mid-1-related chloride channel protein 1, CLCC1, KIAA0761, MCLC
Dilution	WB~~ 1:500
Format	Rabbit IgG in phosphate buffered saline (without Mg <sup>2+</sup> and Ca <sup>2+</sup> ), pH 7.4, 150mM NaCl, 0.09% (W/V) sodium azide and 50% glycerol.
Storage Conditions	-20°C

## Protein Information

Name	CLCC1 {ECO:0000303 PubMed:37142673, ECO:0000312 HGNC:HGNC:29675}
Function	Anion-selective channel with Ca(2+)-dependent and voltage- independent gating. Permeable to small monovalent anions with selectivity for bromide > chloride > nitrate > fluoride (By similarity). Operates in the endoplasmic reticulum (ER) membrane where it mediates chloride efflux to compensate for the loss of positive charges from the ER lumen upon Ca(2+) release. Contributes to the maintenance of ER Ca(2+) pools and activation of unfolded protein response to prevent accumulation of misfolded proteins in the ER lumen. Particularly involved in ER homeostasis mechanisms underlying motor neurons and retinal photoreceptors survival (By similarity) (PubMed: <a href="#">25698737</a> , PubMed: <a href="#">30157172</a> , PubMed: <a href="#">37142673</a> ).
Cellular Location	Endoplasmic reticulum membrane; Multi-pass membrane protein. Note=Within the endoplasmic reticulum (ER), localizes to the mitochondria-associated ER membrane, a zone of contact between the ER and mitochondrial membranes. Enriched in the rough ER. {ECO:0000250 UniProtKB:Q99LI2, ECO:0000269 PubMed:31653868}

**Tissue Location**

Expressed in the retina of the eye, with extensive expression in the lamina cribrosa, optic nerve, ganglion cell layer, inner nuclear layer, outer nuclear layer and retinal pigment epithelium.

**Background**

---

Seems to act as a chloride ion channel (By similarity).

**References**

---

Nagasawa M.,et al.J. Biol. Chem. 276:20413-20418(2001).

Nagase T.,et al.DNA Res. 5:277-286(1998).

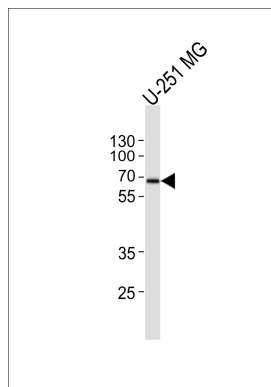
Gregory S.G.,et al.Nature 441:315-321(2006).

Mural R.J.,et al.Submitted (SEP-2005) to the EMBL/GenBank/DDBJ databases.

Olsen J.V.,et al.Cell 127:635-648(2006).

**Images**

---



Western blot analysis of lysate from U-251 MG cell line, using CLCC1 Antibody (AP50622). AP50622 was diluted at 1:1000. A goat anti-rabbit IgG H&L (HRP) at 1:5000 dilution was used as the secondary antibody. Lysate at 35 µg.

Please note: All products are 'FOR RESEARCH USE ONLY. NOT FOR USE IN DIAGNOSTIC OR THERAPEUTIC PROCEDURES'.