

# RABEP2 Antibody

Purified Rabbit Polyclonal Antibody (Pab)

Catalog # AP50625

## Product Information

---

Application	WB
Primary Accession	<a href="#">Q9H5N1</a>
Reactivity	Human, Mouse, Rat
Host	Rabbit
Clonality	polyclonal
Calculated MW	63543

## Additional Information

---

Gene ID	79874
Other Names	Rab GTPase-binding effector protein 2, Rabaptin-5beta, RABEP2, RABPT5B
Dilution	WB~~ 1:500
Format	Rabbit IgG in phosphate buffered saline (without Mg2+ and Ca2+), pH 7.4, 150mM NaCl, 0.09% (W/V) sodium azide and 50% glycerol.
Storage Conditions	-20°C

## Protein Information

---

Name	RABEP2
Synonyms	RABPT5B
Function	Plays a role in membrane trafficking and in homotypic early endosome fusion (PubMed: <a href="#">9524116</a> ). Participates in arteriogenesis by regulating vascular endothelial growth factor receptor 2/VEGFR2 cell surface expression and endosomal trafficking (PubMed: <a href="#">29425100</a> ). By interacting with SDCCAG8, localizes to centrosomes and plays a critical role in ciliogenesis (PubMed: <a href="#">27224062</a> ).
Cellular Location	Cytoplasm. Early endosome. Cytoplasm, cytoskeleton, microtubule organizing center, centrosome. Cytoplasm, cytoskeleton, cilium basal body

## Background

---

Plays a role in membrane trafficking and in homotypic early endosome fusion.

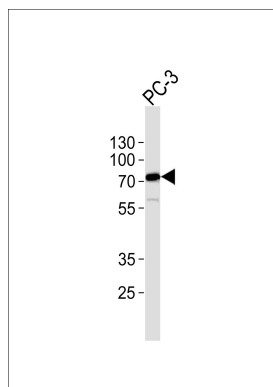
## References

---

Ota T.,et al.Nat. Genet. 36:40-45(2004).  
Gournier H.,et al.EMBO J. 17:1930-1940(1998).  
Burkard T.R.,et al.BMC Syst. Biol. 5:17-17(2011).  
Van Damme P.,et al.Proc. Natl. Acad. Sci. U.S.A. 109:12449-12454(2012).

## Images

---



Western blot analysis of lysate from PC-3 cell line, using RABEP2 Antibody (AP50625). AP50625 was diluted at 1:1000. A goat anti-rabbit IgG H&L (HRP) at 1:5000 dilution was used as the secondary antibody. Lysate at 35 µg.

Please note: All products are 'FOR RESEARCH USE ONLY. NOT FOR USE IN DIAGNOSTIC OR THERAPEUTIC PROCEDURES'.