

Keratin 8 Antibody

Purified Rabbit Polyclonal Antibody (Pab)
Catalog # AP50635

Product Information

Application	WB, IHC
Primary Accession	P05787
Reactivity	Human, Mouse, Rat
Host	Rabbit
Clonality	polyclonal
Calculated MW	53704

Additional Information

Gene ID	3856
Other Names	Keratin, type II cytoskeletal 8, Cytokeratin-8, CK-8, Keratin-8, K8, Type-II keratin Kb8, KRT8, CYK8
Dilution	WB~~1:1000 IHC~~1:50-1:100
Format	Rabbit IgG in phosphate buffered saline (without Mg ²⁺ and Ca ²⁺), pH 7.4, 150mM NaCl, 0.09% (W/V) sodium azide and 50% glycerol.
Storage Conditions	-20°C

Protein Information

Name	KRT8
Synonyms	CYK8
Function	Required for the formation of KRT8/KRT18 filaments that are involved in ARHGEF40-mediated actin stress fiber formation and tensional force-induced stress fiber formation and reinforcement (PubMed: 26823019). Together with KRT19, helps to link the contractile apparatus to dystrophin at the costameres of striated muscle.
Cellular Location	Cytoplasm. Nucleus, nucleoplasm {ECO:0000250 UniProtKB:Q10758}. Nucleus matrix {ECO:0000250 UniProtKB:Q10758}. Cytoplasm, cytoskeleton
Tissue Location	Observed in muscle fibers accumulating in the costameres of myoplasm at the sarcolemma membrane in structures that contain dystrophin and spectrin. Expressed in gingival mucosa and hard palate of the oral cavity.

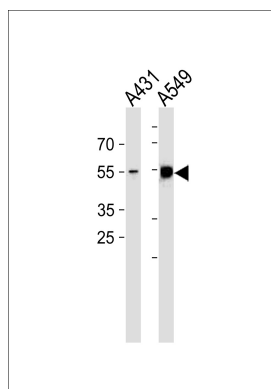
Background

Together with KRT19, helps to link the contractile apparatus to dystrophin at the costameres of striated muscle.

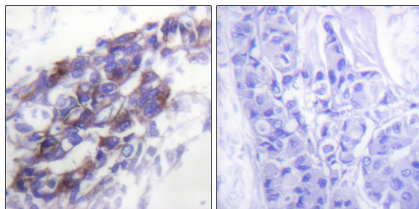
References

Krauss S.,et al.Gene 86:241-249(1990).
Yamamoto R.,et al.Mol. Endocrinol. 4:370-374(1990).
Waseem A.,et al.New Biol. 2:464-478(1990).
Ku N.-O.,et al.J. Biol. Chem. 272:7556-7564(1997).
Ota T.,et al.Nat. Genet. 36:40-45(2004).

Images



Western blot analysis of lysates from A431,A549 cell line (from left to right),using Keratin 8 Antibody(AP50635). AP50635 was diluted at 1:1000 at each lane. A goat anti-rabbit IgG H&L(HRP) at 1:5000 dilution was used as the secondary antibody.Lysates at 35ug per lane.



Immunohistochemical analysis of paraffin-embedded human breast carcinoma tissue using Keratin 8 antibody.

Please note: All products are 'FOR RESEARCH USE ONLY. NOT FOR USE IN DIAGNOSTIC OR THERAPEUTIC PROCEDURES'.