

ALDOB Antibody

Purified Rabbit Polyclonal Antibody (Pab)

Catalog # AP50637

Product Information

Application	WB
Primary Accession	P05062
Reactivity	Human, Mouse, Rat
Host	Rabbit
Clonality	polyclonal
Calculated MW	39473

Additional Information

Gene ID	229
Other Names	Fructose-bisphosphate aldolase B, Liver-type aldolase, ALDOB, ALDB
Dilution	WB~~1:1000
Format	Rabbit IgG in phosphate buffered saline (without Mg ²⁺ and Ca ²⁺), pH 7.4, 150mM NaCl, 0.09% (W/V) sodium azide and 50% glycerol.
Storage Conditions	-20°C

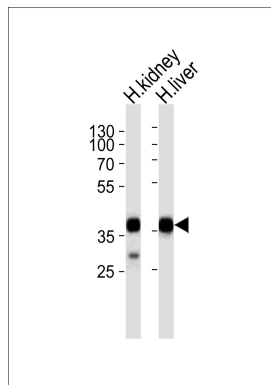
Protein Information

Name	ALDOB {ECO:0000303 PubMed:15880727, ECO:0000312 HGNC:HGNC:417}
Function	Catalyzes the aldol cleavage of fructose 1,6-biphosphate to form two triosephosphates dihydroxyacetone phosphate and D- glyceraldehyde 3-phosphate in glycolysis as well as the reverse stereospecific aldol addition reaction in gluconeogenesis. In fructolysis, metabolizes fructose 1-phosphate derived from the phosphorylation of dietary fructose by fructokinase into dihydroxyacetone phosphate and D-glyceraldehyde (PubMed: 10970798 , PubMed: 12205126 , PubMed: 20848650). Acts as an adapter independently of its enzymatic activity, exerts a tumor suppressor role by stabilizing the ternary complex with G6PD and TP53 to inhibit G6PD activity and keep oxidative pentose phosphate metabolism in check (PubMed: 35122041).
Cellular Location	Cytoplasm, cytosol. Cytoplasm, cytoskeleton, microtubule organizing center, centrosome, centriolar satellite

References

Paolella G.,et al.Nucleic Acids Res. 12:7401-7410(1984).
Sakakibara M.,et al.Nucleic Acids Res. 13:5055-5069(1985).
Rottmann W.H.,et al.Proc. Natl. Acad. Sci. U.S.A. 81:2738-2742(1984).
Mukai T.,et al.J. Biochem. 102:1043-1051(1987).
Tolan D.R.,et al.Mol. Biol. Med. 3:245-264(1986).

Images



Western blot analysis of lysates from human kidney and liver tissue lysate(from left to right),using ALDOB Antibody(AP50637). AP50637 was diluted at 1:1000 at each lane. A goat anti-rabbit IgG H&L(HRP) at 1:5000 dilution was used as the secondary antibody.Lysates at 35ug per lane.

Please note: All products are 'FOR RESEARCH USE ONLY. NOT FOR USE IN DIAGNOSTIC OR THERAPEUTIC PROCEDURES'.