

CLIC3 Antibody

Purified Rabbit Polyclonal Antibody (Pab)

Catalog # AP50638

Product Information

Application	WB
Primary Accession	O95833
Reactivity	Human
Host	Rabbit
Clonality	polyclonal
Calculated MW	26648

Additional Information

Gene ID	9022
Other Names	Chloride intracellular channel protein 3, CLIC3
Dilution	WB~~1:1000
Format	Rabbit IgG in phosphate buffered saline (without Mg2+ and Ca2+), pH 7.4, 150mM NaCl, 0.09% (W/V) sodium azide and 50% glycerol.
Storage Conditions	-20°C

Protein Information

Name	CLIC3 {ECO:0000303 PubMed:32066374, ECO:0000312 HGNC:HGNC:2064}
Function	In the soluble state, catalyzes glutaredoxin-like thiol disulfide exchange reactions with reduced glutathione as electron donor (PubMed: 28198360 , PubMed: 37759794). Reduced in a glutathione-dependent way and secreted into the extracellular matrix where it activates TGM2 and promotes blood vessel growth during tissue remodeling as occurs in tumorigenesis. Can reduce specific cysteines in TGM2 and regulate cofactor binding (PubMed: 28198360). Can insert into membranes and form outwardly rectifying chloride ion channels. May participate in cellular growth control.
Cellular Location	Nucleus. Membrane; Single-pass membrane protein. Cell membrane; Single-pass membrane protein. Cytoplasm. Secreted, extracellular space, extracellular matrix. Note=Predominantly nuclear. Some protein was found in the cytoplasm. Exists both as soluble cytoplasmic protein and as membrane protein with probably a single transmembrane domain (By similarity). Secreted into the extracellular matrix by activated fibroblasts. {ECO:0000250, ECO:0000269 PubMed:28198360}
Tissue Location	Detected in placenta (at protein level). Widely expressed. High expression is

found in placenta followed by lung and heart. Low expression in skeletal muscle, kidney and pancreas

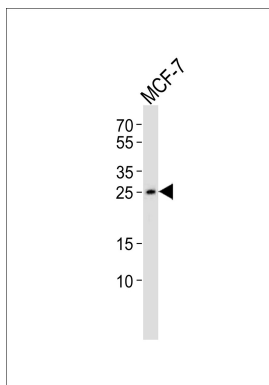
Background

Can insert into membranes and form chloride ion channels. May participate in cellular growth control.

References

Humphray S.J.,et al.Nature 429:369-374(2004).
Mural R.J.,et al.Submitted (JUL-2005) to the EMBL/GenBank/DDBJ databases.
Qian Z.,et al.J. Biol. Chem. 274:1621-1627(1999).
Money T.T.,et al.Placenta 28:429-436(2007).
Littler D.R.,et al.Proteins 78:1594-1600(2010).

Images



Western blot analysis of lysate from MCF-7 cell line,using CLIC3 Antibody(AP50638). AP50638 was diluted at 1:1000. A goat anti-rabbit IgG H&L(HRP) at 1:5000 dilution was used as the secondary antibody.Lysate at 35ug.

Please note: All products are 'FOR RESEARCH USE ONLY. NOT FOR USE IN DIAGNOSTIC OR THERAPEUTIC PROCEDURES'.