

THRB Antibody (AP2, Cleaved-Arg327)

Purified Rabbit Polyclonal Antibody (Pab)

Catalog # AP50644

Product Information

Application	WB
Primary Accession	P00734
Reactivity	Human
Host	Rabbit
Clonality	polyclonal
Calculated MW	70037

Additional Information

Gene ID	2147
Other Names	Prothrombin, Coagulation factor II, Activation peptide fragment 1, Activation peptide fragment 2, Thrombin light chain, Thrombin heavy chain, F2
Dilution	WB~~1:1000
Format	Rabbit IgG in phosphate buffered saline (without Mg ²⁺ and Ca ²⁺), pH 7.4, 150mM NaCl, 0.09% (W/V) sodium azide and 50% glycerol.
Storage Conditions	-20°C

Protein Information

Name	F2
Function	Thrombin, which cleaves bonds after Arg and Lys, converts fibrinogen to fibrin and activates factors V, VII, VIII, XIII, and, in complex with thrombomodulin, protein C. Functions in blood homeostasis, inflammation and wound healing. Activates coagulation factor XI (F11); activation is promoted by the contact with negatively charged surfaces (PubMed: 2019570 , PubMed: 21976677). Triggers the production of pro- inflammatory cytokines, such as MCP-1/CCL2 and IL8/CXCL8, in endothelial cells (PubMed: 30568593 , PubMed: 9780208).
Cellular Location	Secreted, extracellular space.
Tissue Location	Expressed by the liver and secreted in plasma.

Background

Thrombin, which cleaves bonds after Arg and Lys, converts fibrinogen to fibrin and activates factors V, VII, VIII, XIII, and, in complex with thrombomodulin, protein C. Functions in blood homeostasis, inflammation and wound healing.

References

Degen S.J.F.,et al.Biochemistry 26:6165-6177(1987).

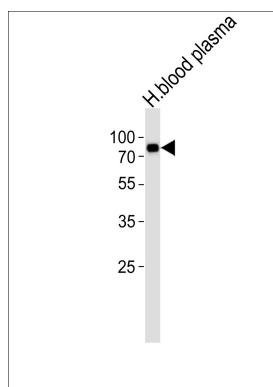
Wang W.,et al.Haemophilia 10:94-97(2004).

Ota T.,et al.Nat. Genet. 36:40-45(2004).

Suzuki Y.,et al.Submitted (APR-2005) to the EMBL/GenBank/DDBJ databases.

Degen S.J.F.,et al.Biochemistry 22:2087-2097(1983).

Images



Western blot analysis of lysate from human blood plasma tissue lysate, using THR B Antibody (AP2, Cleaved-Arg327) (AP50644). AP50644 was diluted at 1:1000. A goat anti-rabbit IgG H&L (HRP) at 1:5000 dilution was used as the secondary antibody. Lysate at 35ug.

Please note: All products are 'FOR RESEARCH USE ONLY. NOT FOR USE IN DIAGNOSTIC OR THERAPEUTIC PROCEDURES'.