

CDKL2 Antibody

Purified Rabbit Polyclonal Antibody (Pab)
Catalog # AP50653

Product Information

Application	WB
Primary Accession	Q92772
Reactivity	Human
Host	Rabbit
Clonality	polyclonal
Calculated MW	56019

Additional Information

Gene ID	8999
Other Names	Cyclin-dependent kinase-like 2, Protein kinase p56 KKIAMRE, Serine/threonine-protein kinase KKIAMRE, CDKL2
Dilution	WB~~1:500
Format	Rabbit IgG in phosphate buffered saline (without Mg ²⁺ and Ca ²⁺), pH 7.4, 150mM NaCl, 0.09% (W/V) sodium azide and 50% glycerol.
Storage Conditions	-20°C

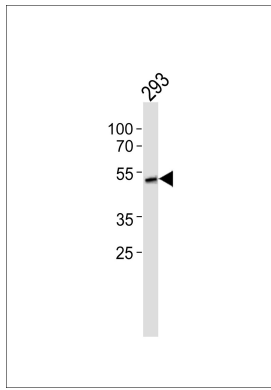
Protein Information

Name	CDKL2 (HGNC:1782)
Cellular Location	Cytoplasm. Nucleus
Tissue Location	Expressed in testis and kidney, and at lower level in brain and lung.

References

Taglienti C.A.,et al.Oncogene 13:2563-2574(1996).
Ota T.,et al.Nat. Genet. 36:40-45(2004).
Mural R.J.,et al.Submitted (JUL-2005) to the EMBL/GenBank/DDBJ databases.
Greenman C.,et al.Nature 446:153-158(2007).

Images



Western blot analysis of lysate from 293 cell line, using CDKL2 Antibody (AP50653). AP50653 was diluted at 1:500. A goat anti-rabbit IgG H&L (HRP) at 1:5000 dilution was used as the secondary antibody. Lysate at 35 μ g.

Please note: All products are 'FOR RESEARCH USE ONLY. NOT FOR USE IN DIAGNOSTIC OR THERAPEUTIC PROCEDURES'.