

# NBPF7 Antibody

Purified Rabbit Polyclonal Antibody (Pab)

Catalog # AP50656

## Product Information

---

Application	WB
Primary Accession	<a href="#">P0C2Y1</a>
Host	Rabbit
Clonality	polyclonal
Calculated MW	48090

## Additional Information

---

Other Names	Putative neuroblastoma breakpoint family member 7, NBPF7
Dilution	WB~~1:500
Format	Rabbit IgG in phosphate buffered saline (without Mg <sup>2+</sup> and Ca <sup>2+</sup> ), pH 7.4, 150mM NaCl, 0.09% (W/V) sodium azide and 50% glycerol.
Storage Conditions	-20°C

## Protein Information

---

Name	NBPF7P ( <a href="#">HGNC:31989</a> )
Synonyms	NBPF7
Cellular Location	Cytoplasm.

## References

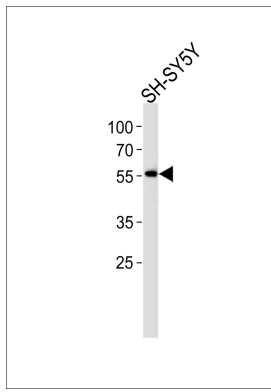
---

Gregory S.G.,et al.Nature 441:315-321(2006).

## Images

---

Western blot analysis of lysate from SH-SY5Y cell line,using NBPF7 Antibody(AP50656). AP50656 was diluted at 1:500. A goat anti-rabbit IgG H&L(HRP) at 1:5000 dilution was used as the secondary antibody.Lysate at 35ug.



Please note: All products are 'FOR RESEARCH USE ONLY. NOT FOR USE IN DIAGNOSTIC OR THERAPEUTIC PROCEDURES'.