

ARRDC3 Antibody

Purified Rabbit Polyclonal Antibody (Pab)

Catalog # AP50658

Product Information

Application	WB
Primary Accession	Q96B67
Reactivity	Human, Mouse, Rat
Host	Rabbit
Clonality	polyclonal
Calculated MW	46395

Additional Information

Gene ID	57561
Other Names	Arrestin domain-containing protein 3, TBP-2-like inducible membrane protein, TLIMP, ARRDC3, KIAA1376
Dilution	WB~~1:1000
Format	Rabbit IgG in phosphate buffered saline (without Mg2+ and Ca2+), pH 7.4, 150mM NaCl, 0.09% (W/V) sodium azide and 50% glycerol.
Storage Conditions	-20°C

Protein Information

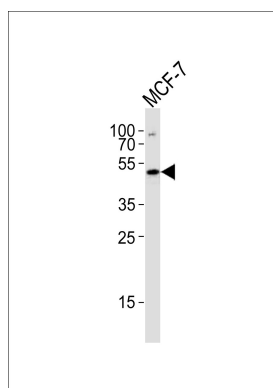
Name	ARRDC3
Synonyms	KIAA1376
Function	Adapter protein that plays a role in regulating cell-surface expression of adrenergic receptors and probably also other G protein- coupled receptors (PubMed: 20559325 , PubMed: 21982743 , PubMed: 23208550). Plays a role in NEDD4-mediated ubiquitination and endocytosis of activated ADRB2 and subsequent ADRB2 degradation (PubMed: 20559325 , PubMed: 23208550). May recruit NEDD4 to ADRB2 (PubMed: 20559325). Alternatively, may function as adapter protein that does not play a major role in recruiting NEDD4 to ADRB2, but rather plays a role in targeting ADRB2 to endosomes (PubMed: 23208550).
Cellular Location	Cytoplasm. Cell membrane; Peripheral membrane protein; Cytoplasmic side Lysosome Endosome Early endosome. Note=Associated with plasma membrane, as well as with endosomes and lysosomes during endocytosis (PubMed:16269462, PubMed:20559325, PubMed:23208550)

Tissue Location	Highly expressed in skeletal muscle, placenta, kidney, lung, liver, blood, adrenal gland, lymph node, mammary gland, thyroid, and trachea (PubMed:16269462, PubMed:21982743). Very low levels in colon, thymus, spleen, small intestine, bladder and bone marrow (PubMed:16269462). Strong expression in differentiated adipocytes compared to preadipocytes (PubMed:16269462). Detected in omental fat and subcutaneous fat tissue (PubMed:21982743)
------------------------	---

References

Nagase T.,et al.DNA Res. 7:65-73(2000).
Ota T.,et al.Nat. Genet. 36:40-45(2004).
Oka S.,et al.Endocrinology 147:733-743(2006).

Images



Western blot analysis of lysate from MCF-7 cell line,using ARRDC3 Antibody(AP50658). AP50658 was diluted at 1:1000. A goat anti-rabbit IgG H&L(HRP) at 1:5000 dilution was used as the secondary antibody.Lysate at 35ug.

Please note: All products are 'FOR RESEARCH USE ONLY. NOT FOR USE IN DIAGNOSTIC OR THERAPEUTIC PROCEDURES'.