

REN Antibody

Purified Rabbit Polyclonal Antibody (Pab)

Catalog # AP50662

Product Information

Application	WB, IHC
Primary Accession	P00797
Reactivity	Human
Host	Rabbit
Clonality	polyclonal
Calculated MW	45057

Additional Information

Gene ID	5972
Other Names	Renin, Angiotensinogenase, REN
Dilution	WB~~1:1000 IHC~~1:50-1:100
Format	Rabbit IgG in phosphate buffered saline (without Mg ²⁺ and Ca ²⁺), pH 7.4, 150mM NaCl, 0.09% (W/V) sodium azide and 50% glycerol.
Storage Conditions	-20°C

Protein Information

Name	REN
Function	Renin is a highly specific endopeptidase, whose only known function is to generate angiotensin I from angiotensinogen in the plasma, initiating a cascade of reactions that produce an elevation of blood pressure and increased sodium retention by the kidney.
Cellular Location	Secreted. Membrane. Note=Associated to membranes via binding to ATP6AP2.

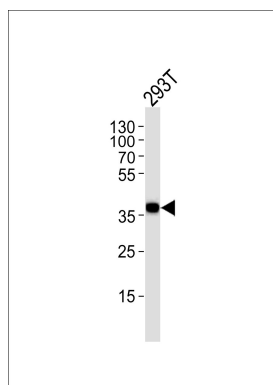
Background

Renin is a highly specific endopeptidase, whose only known function is to generate angiotensin I from angiotensinogen in the plasma, initiating a cascade of reactions that produce an elevation of blood pressure and increased sodium retention by the kidney.

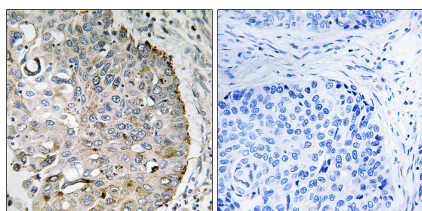
References

Imai T.,et al.Proc. Natl. Acad. Sci. U.S.A. 80:7405-7409(1983).
Morris B.J.,et al.Clin. Sci. 71:345-355(1986).
Hardman J.A.,et al.DNA 3:457-468(1984).
Rieder M.J.,et al.Submitted (OCT-2003) to the EMBL/GenBank/DDBJ databases.
Ebert L.,et al.Submitted (JUN-2004) to the EMBL/GenBank/DDBJ databases.

Images



Western blot analysis of lysate from 293T cell line,using REN Antibody(AP50662). AP50662 was diluted at 1:1000. A goat anti-rabbit IgG H&L(HRP) at 1:5000 dilution was used as the secondary antibody.Lysate at 35ug.



Immunohistochemistry analysis of paraffin-embedded human lung carcinoma tissue, using MRRF antibody.

Please note: All products are 'FOR RESEARCH USE ONLY. NOT FOR USE IN DIAGNOSTIC OR THERAPEUTIC PROCEDURES'.