

14-3-3 θ Antibody

Purified Rabbit Polyclonal Antibody (Pab)

Catalog # AP50665

Product Information

Application	WB
Primary Accession	P27348
Reactivity	Human, Mouse, Rat
Host	Rabbit
Clonality	polyclonal
Calculated MW	27764

Additional Information

Gene ID	10971
Other Names	14-3-3 protein theta, 14-3-3 protein T-cell, 14-3-3 protein tau, Protein HS1, YWHAQ
Dilution	WB~~1:1000
Format	Rabbit IgG in phosphate buffered saline (without Mg ²⁺ and Ca ²⁺), pH 7.4, 150mM NaCl, 0.09% (W/V) sodium azide and 50% glycerol.
Storage Conditions	-20°C

Protein Information

Name	YWHAQ
Function	Adapter protein implicated in the regulation of a large spectrum of both general and specialized signaling pathways. Binds to a large number of partners, usually by recognition of a phosphoserine or phosphothreonine motif. Binding generally results in the modulation of the activity of the binding partner. Negatively regulates the kinase activity of PDPK1.
Cellular Location	Cytoplasm. Note=In neurons, axonally transported to the nerve terminals
Tissue Location	Abundantly expressed in brain, heart and pancreas, and at lower levels in kidney and placenta. Up-regulated in the lumbar spinal cord from patients with sporadic amyotrophic lateral sclerosis (ALS) compared with controls, with highest levels of expression in individuals with predominant lower motor neuron involvement

Background

Adapter protein implicated in the regulation of a large spectrum of both general and specialized signaling pathways. Binds to a large number of partners, usually by recognition of a phosphoserine or phosphothreonine motif. Binding generally results in the modulation of the activity of the binding partner. Negatively regulates the kinase activity of PDPK1.

References

Nielsen P.J.,et al.Biochim. Biophys. Acta 1088:425-428(1991).

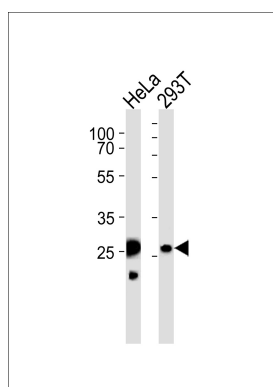
Leffers H.,et al.J. Mol. Biol. 231:982-998(1993).

Kalnina N.,et al.Submitted (OCT-2004) to the EMBL/GenBank/DDBJ databases.

Mural R.J.,et al.Submitted (SEP-2005) to the EMBL/GenBank/DDBJ databases.

Gevaert K.,et al.Nat. Biotechnol. 21:566-569(2003).

Images



Western blot analysis of lysates from HeLa,293T cell line (from left to right),using 14-3-3 θ Antibody(AP50665). AP50665 was diluted at 1:1000 at each lane. A goat anti-rabbit IgG H&L(HRP) at 1:5000 dilution was used as the secondary antibody.Lysates at 35ug per lane.

Please note: All products are 'FOR RESEARCH USE ONLY. NOT FOR USE IN DIAGNOSTIC OR THERAPEUTIC PROCEDURES'.