

Keratin 15 Antibody

Purified Rabbit Polyclonal Antibody (Pab)

Catalog # AP50666

Product Information

Application	WB, IHC
Primary Accession	P19012
Reactivity	Human, Mouse, Rat
Host	Rabbit
Clonality	polyclonal
Calculated MW	49212

Additional Information

Gene ID	3866
Other Names	Keratin, type I cytoskeletal 15, Cytokeratin-15, CK-15, Keratin-15, K15, KRT15, KRTB
Dilution	WB~~1:1000 IHC~~1:50-1:100
Format	Rabbit IgG in phosphate buffered saline (without Mg ²⁺ and Ca ²⁺), pH 7.4, 150mM NaCl, 0.09% (W/V) sodium azide and 50% glycerol.
Storage Conditions	-20°C

Protein Information

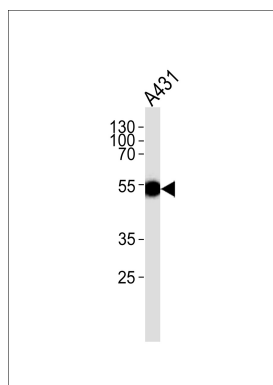
Name	KRT15
Synonyms	KRTB
Tissue Location	Expressed in a discontinuous manner in the basal cell layer of adult skin epidermis, but continuously in the basal layer of fetal skin epidermis and nail. Also expressed in the outer root sheath above the hair bulb in hair follicle (at protein level) Expressed homogeneously in all cell layers of the esophagus and exocervix, but detected in the basal cell layer only of oral mucosa, skin and in the basal plus the next two layers of the suprabasal epithelium of the palate.

References

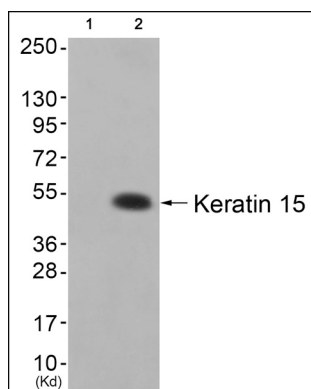
Bader B.L.,et al.Eur. J. Cell Biol. 47:300-319(1988).
Leube R.E.,et al.J. Cell Biol. 106:1249-1261(1988).

Whitlock N.V.,et al.Biochem. Biophys. Res. Commun. 267:462-465(2000).
 Kalnine N.,et al.Submitted (MAY-2003) to the EMBL/GenBank/DDBJ databases.
 Ota T.,et al.Nat. Genet. 36:40-45(2004).

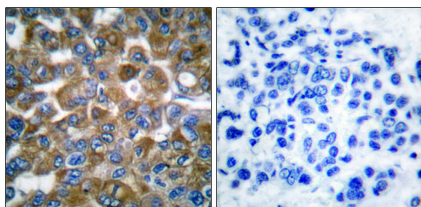
Images



Western blot analysis of lysate from A431 cell line, using Keratin 15 Antibody (AP50666). AP50666 was diluted at 1:1000. A goat anti-rabbit IgG H&L (HRP) at 1:5000 dilution was used as the secondary antibody. Lysate at 35 µg.



Western blot analysis of extracts from colo cells (Lane 2), using Keratin 15 Antibody. The lane on the left is treated with synthesized peptide.



Immunohistochemical analysis of paraffin-embedded human breast carcinoma tissue using Keratin 15 antibody.

Please note: All products are 'FOR RESEARCH USE ONLY. NOT FOR USE IN DIAGNOSTIC OR THERAPEUTIC PROCEDURES'.