

CSTF2 Antibody

Purified Rabbit Polyclonal Antibody (Pab)

Catalog # AP50670

Product Information

| | |
|--------------------------|------------------------|
| Application | WB, IF |
| Primary Accession | P33240 |
| Reactivity | Human, Mouse |
| Host | Rabbit |
| Clonality | polyclonal |
| Calculated MW | 60959 |

Additional Information

| | |
|---------------------------|--|
| Gene ID | 1478 |
| Other Names | Cleavage stimulation factor subunit 2, CF-1 64 kDa subunit, Cleavage stimulation factor 64 kDa subunit, CSTF 64 kDa subunit, CstF-64, CSTF2 |
| Dilution | WB~~1:1000 IF~~1:100 |
| Format | Rabbit IgG in phosphate buffered saline (without Mg ²⁺ and Ca ²⁺), pH 7.4, 150mM NaCl, 0.09% (W/V) sodium azide and 50% glycerol. |
| Storage Conditions | -20°C |

Protein Information

| | |
|--------------------------|---|
| Name | CSTF2 |
| Function | One of the multiple factors required for polyadenylation and 3'-end cleavage of mammalian pre-mRNAs. This subunit is directly involved in the binding to pre-mRNAs. |
| Cellular Location | Nucleus. Note=Localized with DDX1 in cleavage bodies. |

Background

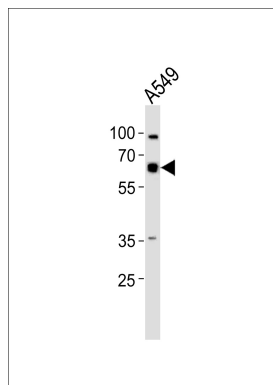
One of the multiple factors required for polyadenylation and 3'-end cleavage of mammalian pre-mRNAs. This subunit is directly involved in the binding to pre-mRNAs (By similarity).

References

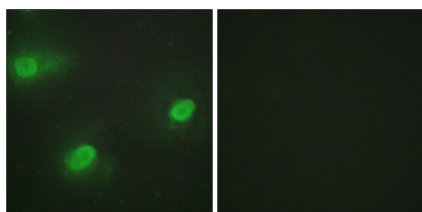
Takagaki Y.,et al.Proc. Natl. Acad. Sci. U.S.A. 89:1403-1407(1992).

Kalnine N.,et al.Submitted (AUG-2003) to the EMBL/GenBank/DDBJ databases.
Ross M.T.,et al.Nature 434:325-337(2005).
Takagaki Y.,et al.Mol. Cell. Biol. 17:3907-3914(1997).
Martincic K.,et al.Proc. Natl. Acad. Sci. U.S.A. 95:11095-11100(1998).

Images



Western blot analysis of lysate from A549 cell line,using CSTF2 Antibody(AP50670). AP50670 was diluted at 1:1000. A goat anti-rabbit IgG H&L(HRP) at 1:5000 dilution was used as the secondary antibody.Lysate at 35ug.



Immunofluorescence analysis of HeLa cells, using CSTF2 antibody.

Please note: All products are 'FOR RESEARCH USE ONLY. NOT FOR USE IN DIAGNOSTIC OR THERAPEUTIC PROCEDURES'.