

MX2 Antibody

Purified Rabbit Polyclonal Antibody (Pab)

Catalog # AP50672

Product Information

Application	WB
Primary Accession	P20592
Reactivity	Human
Host	Rabbit
Clonality	polyclonal
Calculated MW	82089

Additional Information

Gene ID	4600
Other Names	Interferon-induced GTP-binding protein Mx2, Interferon-regulated resistance GTP-binding protein MxB, Myxovirus resistance protein 2, p78-related protein, MX2
Dilution	WB~~1:1000
Format	Rabbit IgG in phosphate buffered saline (without Mg ²⁺ and Ca ²⁺), pH 7.4, 150mM NaCl, 0.09% (W/V) sodium azide and 50% glycerol.
Storage Conditions	-20°C

Protein Information

Name	MX2
Function	Interferon-induced dynamin-like GTPase with potent antiviral activity against human immunodeficiency virus type 1 (HIV-1). Acts by targeting the viral capsid and affects the nuclear uptake and/or stability of the HIV-1 replication complex and the subsequent chromosomal integration of the proviral DNA. Exhibits antiviral activity also against simian immunodeficiency virus (SIV-mnd). May play a role in regulating nucleocytoplasmic transport and cell-cycle progression.
Cellular Location	Cytoplasm. Nucleus. Nucleus, nuclear pore complex. Note=Localization to nuclear pores requires GTP-binding

Background

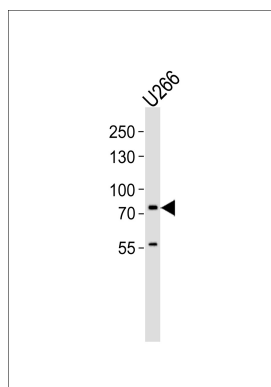
Interferon-induced dynamin-like GTPase with potent antiviral activity against human immunodeficiency

virus type 1 (HIV-1). Acts by targeting the viral capsid and affects the nuclear uptake and/or stability of the HIV-1 replication complex and the subsequent chromosomal integration of the proviral DNA. Exhibits antiviral activity also against simian immunodeficiency virus (SIV-mnd). May play a role in regulating nucleocytoplasmic transport and cell-cycle progression.

References

Aebi M.,et al.Mol. Cell. Biol. 9:5062-5072(1989).
Hattori M.,et al.Nature 405:311-319(2000).
Mural R.J.,et al.Submitted (SEP-2005) to the EMBL/GenBank/DDBJ databases.
Horisberger M.A.,et al.J. Virol. 64:1171-1181(1990).
King M.C.,et al.Proc. Natl. Acad. Sci. U.S.A. 101:8957-8962(2004).

Images



Western blot analysis of lysate from U266 cell line,using MX2 Antibody(AP50672). AP50672 was diluted at 1:1000. A goat anti-rabbit IgG H&L(HRP) at 1:5000 dilution was used as the secondary antibody.Lysate at 35ug.

Please note: All products are 'FOR RESEARCH USE ONLY. NOT FOR USE IN DIAGNOSTIC OR THERAPEUTIC PROCEDURES'.