

# TSPAN8 Antibody

Purified Rabbit Polyclonal Antibody (Pab)

Catalog # AP50676

## Product Information

---

Application	WB, IF
Primary Accession	<a href="#">P19075</a>
Reactivity	Human
Host	Rabbit
Clonality	polyclonal
Calculated MW	26044

## Additional Information

---

Gene ID	7103
Other Names	Tetraspanin-8, Tspan-8, Transmembrane 4 superfamily member 3, Tumor-associated antigen CO-029, TSPAN8, TM4SF3
Dilution	WB~~1:1000 IF~~1:100
Format	Rabbit IgG in phosphate buffered saline (without Mg2+ and Ca2+), pH 7.4, 150mM NaCl, 0.09% (W/V) sodium azide and 50% glycerol.
Storage Conditions	-20°C

## Protein Information

---

Name	TSPAN8
Synonyms	TM4SF3
Function	Structural component of specialized membrane microdomains known as tetraspanin-enriched microdomains (TERMs), which act as platforms for receptor clustering and signaling (PubMed: <a href="#">27180357</a> , PubMed: <a href="#">36078095</a> ). Participates thereby in diverse biological functions such as cell signal transduction, migration and protein trafficking (PubMed: <a href="#">25761241</a> ). Promotes ADAM17-mediated TNF-alpha processing through recruitment of ADAM17 to tetraspanin-enriched micro-domains (TEMs) (PubMed: <a href="#">36078095</a> ). Forms a complex with RICTOR and integrin alpha3/ITGA3 to mediate mTORC2 activation and AKT1 phosphorylation leading to cell migration (PubMed: <a href="#">25761241</a> ). Reduces apoptosis and autophagy induced by high glucose levels through forming a complex with mTOR and RICTOR (PubMed: <a href="#">35904232</a> ). Contributes to the maintenance of intestinal epithelial barrier and plays a role in the regulation of intestine inflammation by switching interferon gamma receptor 1/IFNGR1 from clathrin-dependent to lipid raft-dependent endocytosis route to limit STAT1 activation magnitude

and duration (PubMed:[37204469](#)). Acts as a modulator of the endothelin axis by associating with endothelin converting enzyme ECE1 and regulating its activity of conversion of the endothelin-1 precursor to endothelin (PubMed:[37835445](#)).

**Cellular Location**

Cell membrane; Multi-pass membrane protein

**Tissue Location**

Gastric, colon, rectal, and pancreatic carcinomas.

## References

---

Szala S.,et al.Proc. Natl. Acad. Sci. U.S.A. 87:6833-6837(1990).

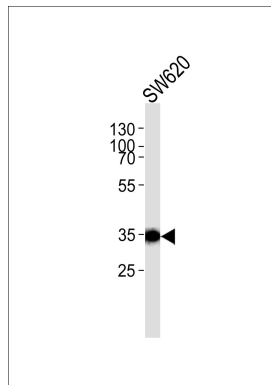
Ota T.,et al.Nat. Genet. 36:40-45(2004).

Mural R.J.,et al.Submitted (JUL-2005) to the EMBL/GenBank/DBJ databases.

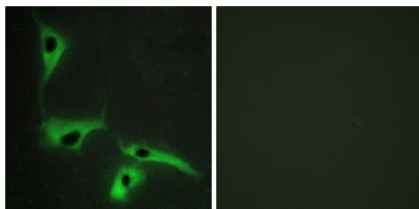
Chen R.,et al.J. Proteome Res. 8:651-661(2009).

## Images

---



Western blot analysis of lysate from SW620 cell line,using TSPAN8 Antibody(AP50676). AP50676 was diluted at 1:1000. A goat anti-rabbit IgG H&L(HRP) at 1:5000 dilution was used as the secondary antibody.Lysate at 35ug.



Immunofluorescence analysis of HeLa cells, using TSPAN8 antibody.

Please note: All products are 'FOR RESEARCH USE ONLY. NOT FOR USE IN DIAGNOSTIC OR THERAPEUTIC PROCEDURES'.