

COMT Antibody

Purified Rabbit Polyclonal Antibody (Pab)

Catalog # AP50677

Product Information

Application	WB
Primary Accession	P21964
Host	Rabbit
Clonality	polyclonal
Calculated MW	30037

Additional Information

Gene ID	1312
Other Names	Catechol O-methyltransferase, COMT
Dilution	WB~~1:1000
Format	Rabbit IgG in phosphate buffered saline (without Mg ²⁺ and Ca ²⁺), pH 7.4, 150mM NaCl, 0.09% (W/V) sodium azide and 50% glycerol.
Storage Conditions	-20°C

Protein Information

Name	COMT (HGNC:2228)
Function	Catalyzes the O-methylation, and thereby the inactivation, of catecholamine neurotransmitters and catechol hormones. Also shortens the biological half-lives of certain neuroactive drugs, like L-DOPA, alpha-methyl DOPA and isoproterenol.
Cellular Location	[Isoform Soluble]: Cytoplasm
Tissue Location	Brain, liver, placenta, lymphocytes and erythrocytes

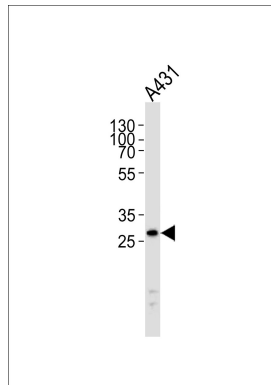
Background

Catalyzes the O-methylation, and thereby the inactivation, of catecholamine neurotransmitters and catechol hormones. Also shortens the biological half-lives of certain neuroactive drugs, like L-DOPA, alpha-methyl DOPA and isoproterenol.

References

Lundstroem K.,et al.DNA Cell Biol. 10:181-189(1991).
Bertocci B.,et al.Proc. Natl. Acad. Sci. U.S.A. 88:1416-1420(1991).
Tenhunen J.,et al.Eur. J. Biochem. 223:1049-1059(1994).
Ota T.,et al.Nat. Genet. 36:40-45(2004).
Collins J.E.,et al.Genome Biol. 5:R84.1-R84.11(2004).

Images



Western blot analysis of lysate from A431 cell line,using COMT Antibody(AP50677). AP50677 was diluted at 1:1000. A goat anti-rabbit IgG H&L(HRP) at 1:5000 dilution was used as the secondary antibody.Lysate at 35ug.

Please note: All products are 'FOR RESEARCH USE ONLY. NOT FOR USE IN DIAGNOSTIC OR THERAPEUTIC PROCEDURES'.