

# CALB2 Antibody

Purified Rabbit Polyclonal Antibody (Pab)

Catalog # AP50684

## Product Information

---

Application	WB
Primary Accession	<a href="#">P22676</a>
Reactivity	Human, Mouse, Rat
Host	Rabbit
Clonality	polyclonal
Calculated MW	31540

## Additional Information

---

Gene ID	794
Other Names	Calretinin, CR, 29 kDa calbindin, CALB2, CAB29
Dilution	WB~~1:1000
Format	Rabbit IgG in phosphate buffered saline (without Mg <sup>2+</sup> and Ca <sup>2+</sup> ), pH 7.4, 150mM NaCl, 0.09% (W/V) sodium azide and 50% glycerol.
Storage Conditions	-20°C

## Protein Information

---

Name	CALB2 ( <a href="#">HGNC:1435</a> )
Synonyms	CAB29
Function	Calcium-binding protein involved in calcium homeostasis and signal transduction. It plays a critical role in buffering intracellular calcium levels and modulating calcium-dependent signaling pathways (PubMed: <a href="#">2001709</a> ). Predominantly expressed in specific neuronal populations, influences synaptic plasticity and neuronal excitability, contributing to learning and memory (By similarity). During embryonic development, it facilitates neuronal differentiation and maturation (By similarity).
Cellular Location	Synapse {ECO:0000250 UniProtKB:Q08331}. Cell projection, dendrite {ECO:0000250 UniProtKB:Q08331}. Note=Located in dendrioles, small dendrites that makes up a brush structure found as the terminal specialization of a dendrite of a unipolar brush cell {ECO:0000250 UniProtKB:Q08331}
Tissue Location	Brain.

## Background

---

Calretinin is a calcium-binding protein which is abundant in auditory neurons.

## References

---

Parmentier M.,et al.Adv. Exp. Med. Biol. 255:233-240(1989).

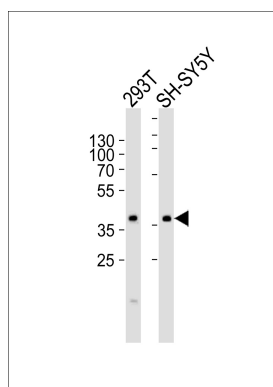
Parmentier M.,et al.Eur. J. Biochem. 196:79-85(1991).

Ota T.,et al.Nat. Genet. 36:40-45(2004).

Suzuki Y.,et al.Submitted (APR-2005) to the EMBL/GenBank/DDBJ databases.

## Images

---



Western blot analysis of lysates from 293T,SH-SY5Y cell line (from left to right),using CALB2 Antibody(AP50684). AP50684 was diluted at 1:1000 at each lane. A goat anti-rabbit IgG H&L(HRP) at 1:5000 dilution was used as the secondary antibody.Lysates at 35ug per lane.

Please note: All products are 'FOR RESEARCH USE ONLY. NOT FOR USE IN DIAGNOSTIC OR THERAPEUTIC PROCEDURES'.