

# ES8L2 Antibody

Purified Rabbit Polyclonal Antibody (Pab)

Catalog # AP50687

## Product Information

---

Application	WB
Primary Accession	<a href="#">Q9H6S3</a>
Reactivity	Human, Mouse
Host	Rabbit
Clonality	polyclonal
Calculated MW	80621

## Additional Information

---

Gene ID	64787
Other Names	Epidermal growth factor receptor kinase substrate 8-like protein 2, EPS8-like protein 2, Epidermal growth factor receptor pathway substrate 8-related protein 2, EPS8-related protein 2, EPS8L2, EPS8R2
Dilution	WB~~ 1:1000
Format	Rabbit IgG in phosphate buffered saline (without Mg2+ and Ca2+), pH 7.4, 150mM NaCl, 0.09% (W/V) sodium azide and 50% glycerol.
Storage Conditions	-20°C

## Protein Information

---

Name	EPS8L2
Synonyms	EPS8R2
Function	Stimulates guanine exchange activity of SOS1. May play a role in membrane ruffling and remodeling of the actin cytoskeleton. In the cochlea, is required for stereocilia maintenance in adult hair cells (By similarity).
Cellular Location	Cytoplasm. Cell projection, stereocilium {ECO:0000250 UniProtKB:Q99K30}. Note=Localizes at the tips of the stereocilia of the inner and outer hair cells {ECO:0000250 UniProtKB:Q99K30}
Tissue Location	Detected in fibroblasts and placenta.

## Background

---

Stimulates guanine exchange activity of SOS1. May play a role in membrane ruffling and remodeling of the actin cytoskeleton.

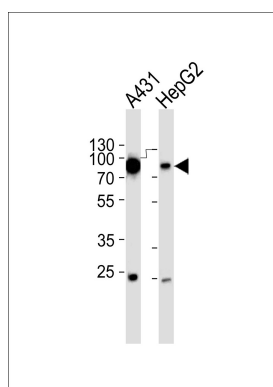
## References

---

Tocchetti A.,et al.Genomics 81:234-244(2003).  
Wan D.,et al.Proc. Natl. Acad. Sci. U.S.A. 101:15724-15729(2004).  
Ota T.,et al.Nat. Genet. 36:40-45(2004).  
Suzuki Y.,et al.Submitted (APR-2005) to the EMBL/GenBank/DDBJ databases.  
Offenhaeuser N.,et al.Mol. Biol. Cell 15:91-98(2004).

## Images

---



Western blot analysis of lysates from A431,HepG2 cell line (from left to right),using ES8L2 Antibody(AP50687). AP50687 was diluted at 1:1000 at each lane. A goat anti-rabbit IgG H&L(HRP) at 1:5000 dilution was used as the secondary antibody.Lysates at 35ug per lane.

Please note: All products are 'FOR RESEARCH USE ONLY. NOT FOR USE IN DIAGNOSTIC OR THERAPEUTIC PROCEDURES'.