

ALX3 Antibody

Purified Rabbit Polyclonal Antibody (Pab)
Catalog # AP50690

Product Information

Application	WB, IF
Primary Accession	O95076
Reactivity	Human, Mouse, Rat
Host	Rabbit
Clonality	polyclonal
Calculated MW	36935

Additional Information

Gene ID	257
Other Names	Homeobox protein aristaless-like 3, Proline-rich transcription factor ALX3, ALX3
Dilution	WB~~1:1000 IF~~1:100
Format	Rabbit IgG in phosphate buffered saline (without Mg ²⁺ and Ca ²⁺), pH 7.4, 150mM NaCl, 0.09% (W/V) sodium azide and 50% glycerol.
Storage Conditions	-20°C

Protein Information

Name	ALX3
Function	Transcriptional regulator with a possible role in patterning of mesoderm during development.
Cellular Location	Nucleus {ECO:0000255 PROSITE-ProRule:PRU00108}.

Background

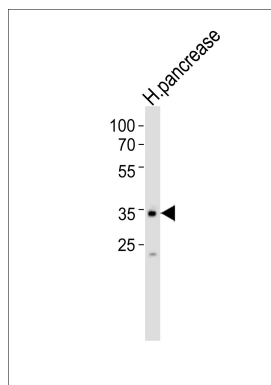
Transcriptional regulator with a possible role in patterning of mesoderm during development (By similarity).

References

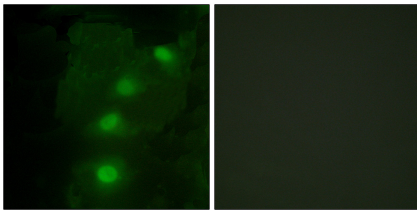
Wimmer K., et al. *Genes Chromosomes Cancer* 33:285-294(2002).
Gregory S.G., et al. *Nature* 441:315-321(2006).

Mural R.J.,et al.Submitted (JUL-2005) to the EMBL/GenBank/DDBJ databases.
Twigg S.R.F.,et al.Am. J. Hum. Genet. 84:698-705(2009).

Images



Western blot analysis of lysate from human pancreas tissue lysate,using ALX3 Antibody(AP50690). AP50690 was diluted at 1:1000. A goat anti-rabbit IgG H&L(HRP) at 1:5000 dilution was used as the secondary antibody.Lysate at 35ug.



Immunofluorescence analysis of HeLa cells, using ALX3 antibody.

Please note: All products are 'FOR RESEARCH USE ONLY. NOT FOR USE IN DIAGNOSTIC OR THERAPEUTIC PROCEDURES'.