

# RANBP6 Antibody

Purified Rabbit Polyclonal Antibody (Pab)

Catalog # AP50694

## Product Information

---

<b>Application</b>	WB
<b>Primary Accession</b>	<a href="#">O60518</a>
<b>Reactivity</b>	Human, Mouse
<b>Host</b>	Rabbit
<b>Clonality</b>	polyclonal
<b>Calculated MW</b>	124714

## Additional Information

---

<b>Gene ID</b>	26953
<b>Other Names</b>	Ran-binding protein 6, RanBP6, RANBP6
<b>Dilution</b>	WB~~1:1000
<b>Format</b>	Rabbit IgG in phosphate buffered saline (without Mg <sup>2+</sup> and Ca <sup>2+</sup> ), pH 7.4, 150mM NaCl, 0.09% (W/V) sodium azide and 50% glycerol.
<b>Storage Conditions</b>	-20°C

## Protein Information

---

<b>Name</b>	RANBP6
<b>Function</b>	May function in nuclear protein import as nuclear transport receptor.
<b>Cellular Location</b>	Cytoplasm. Nucleus.

## Background

---

May function in nuclear protein import as nuclear transport receptor.

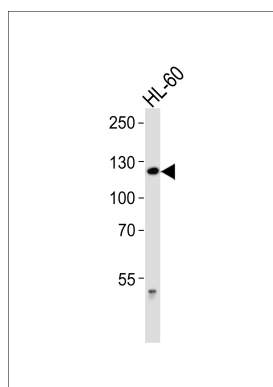
## References

---

Goerlich D.,et al.Submitted (DEC-1997) to the EMBL/GenBank/DDBJ databases.  
Bechtel S.,et al.BMC Genomics 8:399-399(2007).  
Humphray S.J.,et al.Nature 429:369-374(2004).  
Gauci S.,et al.Anal. Chem. 81:4493-4501(2009).  
Burkard T.R.,et al.BMC Syst. Biol. 5:17-17(2011).

## Images

---



Western blot analysis of lysate from HL-60 cell line, using RANBP6 Antibody (AP50694). AP50694 was diluted at 1:1000. A goat anti-rabbit IgG H&L (HRP) at 1:5000 dilution was used as the secondary antibody. Lysate at 35 µg.

Please note: All products are 'FOR RESEARCH USE ONLY. NOT FOR USE IN DIAGNOSTIC OR THERAPEUTIC PROCEDURES'.