

# MMP-23 Antibody

Purified Rabbit Polyclonal Antibody (Pab)

Catalog # AP50697

## Product Information

---

Application	WB
Primary Accession	<a href="#">O75900</a>
Reactivity	Human, Mouse, Rat
Host	Rabbit
Clonality	polyclonal
Calculated MW	43935

## Additional Information

---

Gene ID	8510
Other Names	Matrix metalloproteinase-23, MMP-23, 3424-, Femalysin, MIFR-1, Matrix metalloproteinase-21, MMP-21, Matrix metalloproteinase-22, MMP-22, Matrix metalloproteinase-23, soluble form, MMP23A, MMP21
Dilution	WB~~1:1000
Format	Rabbit IgG in phosphate buffered saline (without Mg <sup>2+</sup> and Ca <sup>2+</sup> ), pH 7.4, 150mM NaCl, 0.09% (W/V) sodium azide and 50% glycerol.
Storage Conditions	-20°C

## Protein Information

---

Name	MMP23B
Synonyms	MMP21, MMP22
Function	Protease. May regulate the surface expression of some potassium channels by retaining them in the endoplasmic reticulum (By similarity).
Cellular Location	Endoplasmic reticulum membrane; Single-pass type II membrane protein. Membrane; Single-pass type II membrane protein. Note=A secreted form produced by proteolytic cleavage may also exist.
Tissue Location	Predominantly expressed in ovary, testis and prostate.

## Background

---

Protease. May regulate the surface expression of some potassium channels by retaining them in the

endoplasmic reticulum (By similarity).

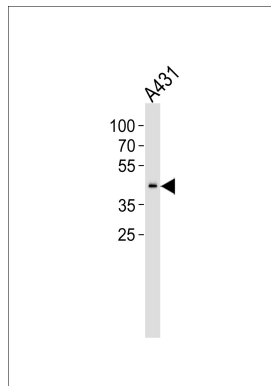
## References

---

Gururajan R.,et al.Genomics 52:101-106(1998).  
Velasco G.,et al.J. Biol. Chem. 274:4570-4576(1999).  
Ohnishi J.,et al.Mol. Endocrinol. 15:747-764(2001).  
Gregory S.G.,et al.Nature 441:315-321(2006).

## Images

---



Western blot analysis of lysate from A431 cell line,using  
MMP-23 Antibody(AP50697). AP50697 was diluted at  
1:1000. A goat anti-rabbit IgG H&L(HRP) at 1:5000 dilution  
was used as the secondary antibody.Lysate at 35ug.

Please note: All products are 'FOR RESEARCH USE ONLY. NOT FOR USE IN DIAGNOSTIC OR THERAPEUTIC PROCEDURES'.