

EPB41L2 Antibody

Purified Rabbit Polyclonal Antibody (Pab)

Catalog # AP50701

Product Information

Application	WB
Primary Accession	O43491
Reactivity	Human
Host	Rabbit
Clonality	polyclonal
Calculated MW	112588

Additional Information

Gene ID	2037
Other Names	Band 41-like protein 2, Generally expressed protein 41, 41G, EPB41L2
Dilution	WB~~1:1000
Format	Rabbit IgG in phosphate buffered saline (without Mg ²⁺ and Ca ²⁺), pH 7.4, 150mM NaCl, 0.09% (W/V) sodium azide and 50% glycerol.
Storage Conditions	-20°C

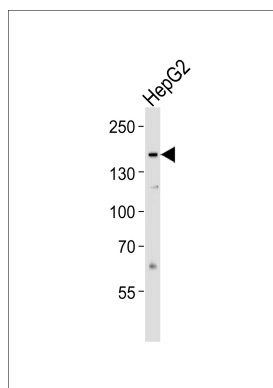
Protein Information

Name	EPB41L2 (HGNC:3379)
Function	Required for dynein-dynactin complex and NUMA1 recruitment at the mitotic cell cortex during anaphase (PubMed: 23870127).
Cellular Location	Cytoplasm, cytoskeleton. Cytoplasm, cell cortex. Cell membrane
Tissue Location	Widely expressed.

References

Parra M.,et al.Genomics 49:298-306(1998).
Liu J.,et al.Submitted (JUL-2001) to the EMBL/GenBank/DDBJ databases.
Ota T.,et al.Nat. Genet. 36:40-45(2004).
Bechtel S.,et al.BMC Genomics 8:399-399(2007).
Mungall A.J.,et al.Nature 425:805-811(2003).

Images



Western blot analysis of lysate from HepG2 cell line, using EPB41L2 Antibody(AP50701). AP50701 was diluted at 1:1000. A goat anti-rabbit IgG H&L(HRP) at 1:5000 dilution was used as the secondary antibody. Lysate at 35ug.

Please note: All products are 'FOR RESEARCH USE ONLY. NOT FOR USE IN DIAGNOSTIC OR THERAPEUTIC PROCEDURES'.