

AMPH Antibody

Purified Rabbit Polyclonal Antibody (Pab)

Catalog # AP50703

Product Information

Application	WB
Primary Accession	P49418
Reactivity	Human, Mouse, Rat
Host	Rabbit
Clonality	polyclonal
Calculated MW	76257

Additional Information

Gene ID	273
Other Names	Amphiphysin, AMPH, AMPH1
Dilution	WB~~1:1000
Format	Rabbit IgG in phosphate buffered saline (without Mg ²⁺ and Ca ²⁺), pH 7.4, 150mM NaCl, 0.09% (W/V) sodium azide and 50% glycerol.
Storage Conditions	-20°C

Protein Information

Name	AMPH
Synonyms	AMPH1
Function	May participate in mechanisms of regulated exocytosis in synapses and certain endocrine cell types. May control the properties of the membrane associated cytoskeleton.
Cellular Location	Cytoplasmic vesicle, secretory vesicle, synaptic vesicle membrane; Peripheral membrane protein; Cytoplasmic side Cytoplasm, cytoskeleton
Tissue Location	Neurons, certain endocrine cell types and spermatocytes

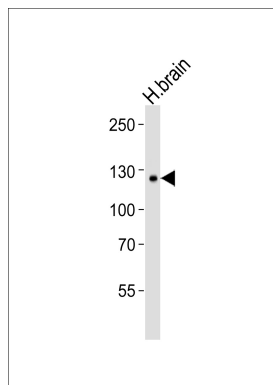
Background

May participate in mechanisms of regulated exocytosis in synapses and certain endocrine cell types. May control the properties of the membrane associated cytoskeleton.

References

David C.,et al.FEBS Lett. 351:73-79(1994).
Yamamoto R.,et al.Hum. Mol. Genet. 4:265-268(1995).
Floyd S.R.,et al.Mol. Med. 4:29-39(1998).
Scherer S.W.,et al.Science 300:767-772(2003).
Mural R.J.,et al.Submitted (JUL-2005) to the EMBL/GenBank/DDBJ databases.

Images



Western blot analysis of lysate from human brain tissue lysate,using AMPH Antibody(AP50703). AP50703 was diluted at 1:1000. A goat anti-rabbit IgG H&L(HRP) at 1:5000 dilution was used as the secondary antibody.Lysate at 35ug.

Please note: All products are 'FOR RESEARCH USE ONLY. NOT FOR USE IN DIAGNOSTIC OR THERAPEUTIC PROCEDURES'.