

PITPNB Antibody

Purified Rabbit Polyclonal Antibody (Pab)

Catalog # AP50704

Product Information

Application	WB
Primary Accession	P48739
Reactivity	Human, Mouse, Rat
Host	Rabbit
Clonality	polyclonal
Calculated MW	31540

Additional Information

Gene ID	23760
Other Names	Phosphatidylinositol transfer protein beta isoform, PI-TP-beta, PtdIns transfer protein beta, PtdInsTP beta, PITPNB
Dilution	WB~~1:1000
Format	Rabbit IgG in phosphate buffered saline (without Mg ²⁺ and Ca ²⁺), pH 7.4, 150mM NaCl, 0.09% (W/V) sodium azide and 50% glycerol.
Storage Conditions	-20°C

Protein Information

Name	PITPNB
Function	Catalyzes the transfer of phosphatidylinositol and phosphatidylcholine between membranes (PubMed: 10531358 , PubMed: 18636990 , PubMed: 20332109). Also catalyzes the transfer of sphingomyelin (By similarity). Required for COPI-mediated retrograde transport from the Golgi to the endoplasmic reticulum; phosphatidylinositol and phosphatidylcholine transfer activity is essential for this function (PubMed: 20332109).
Cellular Location	Golgi apparatus {ECO:0000250 UniProtKB:P53811}. Golgi apparatus membrane {ECO:0000250 UniProtKB:P53812}. Endoplasmic reticulum membrane {ECO:0000250 UniProtKB:P53812}
Tissue Location	Widely expressed in various tissues including brain

Background

Catalyzes the transfer of PtdIns and phosphatidylcholine between membranes.

References

Tanaka S.,et al.Biochim. Biophys. Acta 1259:199-202(1995).

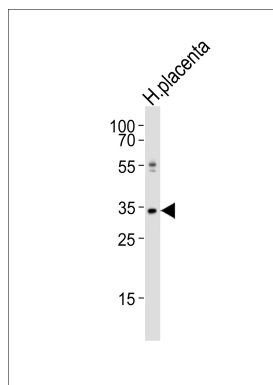
Collins J.E.,et al.Genome Biol. 5:R84.1-R84.11(2004).

Dunham I.,et al.Nature 402:489-495(1999).

Choudhary C.,et al.Science 325:834-840(2009).

Burkard T.R.,et al.BMC Syst. Biol. 5:17-17(2011).

Images



Western blot analysis of lysate from human placenta tissue lysate, using PITPNB Antibody (AP50704). AP50704 was diluted at 1:1000. A goat anti-rabbit IgG H&L (HRP) at 1:5000 dilution was used as the secondary antibody. Lysate at 35 µg.

Please note: All products are 'FOR RESEARCH USE ONLY. NOT FOR USE IN DIAGNOSTIC OR THERAPEUTIC PROCEDURES'.