

NDUFA8 Antibody

Purified Rabbit Polyclonal Antibody (Pab)

Catalog # AP50708

Product Information

Application	WB, IHC
Primary Accession	P51970
Reactivity	Human
Host	Rabbit
Clonality	polyclonal
Calculated MW	20105

Additional Information

Gene ID	4702
Other Names	NADH dehydrogenase [ubiquinone] 1 alpha subcomplex subunit 8, Complex I-19kD, CI-19kD, Complex I-PGIV, CI-PGIV, NADH-ubiquinone oxidoreductase 19 kDa subunit, NDUFA8
Dilution	WB~~1:1000 IHC~~1:50-100
Format	Rabbit IgG in phosphate buffered saline (without Mg ²⁺ and Ca ²⁺), pH 7.4, 150mM NaCl, 0.09% (W/V) sodium azide and 50% glycerol.
Storage Conditions	-20°C

Protein Information

Name	NDUFA8
Function	Accessory subunit of the mitochondrial membrane respiratory chain NADH dehydrogenase (Complex I), that is believed not to be involved in catalysis (PubMed: 27626371 , PubMed: 32385911 , PubMed: 33153867). Complex I functions in the transfer of electrons from NADH to the respiratory chain (PubMed: 27626371). The immediate electron acceptor for the enzyme is believed to be ubiquinone (PubMed: 27626371).
Cellular Location	Mitochondrion inner membrane; Peripheral membrane protein. Mitochondrion intermembrane space. Mitochondrion

Background

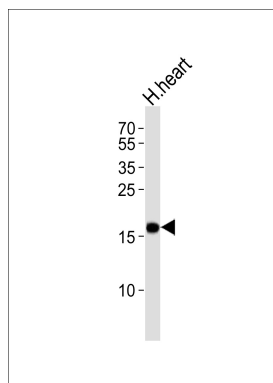
Accessory subunit of the mitochondrial membrane respiratory chain NADH dehydrogenase (Complex I), that is believed not to be involved in catalysis. Complex I functions in the transfer of electrons from NADH to

the respiratory chain. The immediate electron acceptor for the enzyme is believed to be ubiquinone.

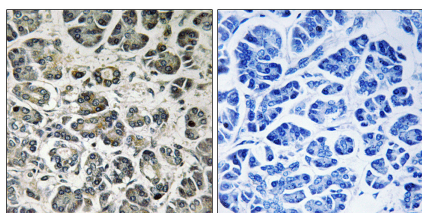
References

Triepels R.,et al.Hum. Genet. 103:557-563(1998).
Ota T.,et al.Nat. Genet. 36:40-45(2004).
Humphray S.J.,et al.Nature 429:369-374(2004).
Mural R.J.,et al.Submitted (JUL-2005) to the EMBL/GenBank/DDBJ databases.
Sarto C.,et al.Electrophoresis 18:599-604(1997).

Images



Western blot analysis of lysate from human heart tissue lysate,using NDUFA8 Antibody(AP50708). AP50708 was diluted at 1:1000. A goat anti-rabbit IgG H&L(HRP) at 1:5000 dilution was used as the secondary antibody.Lysate at 35ug.



Immunohistochemistry analysis of paraffin-embedded human pancreas tissue using NDUFA8 antibody.

Please note: All products are 'FOR RESEARCH USE ONLY. NOT FOR USE IN DIAGNOSTIC OR THERAPEUTIC PROCEDURES'.