

# SIX6 Antibody

Purified Rabbit Polyclonal Antibody (Pab)

Catalog # AP50710

## Product Information

---

<b>Application</b>	WB, IF
<b>Primary Accession</b>	<a href="#">O95475</a>
<b>Reactivity</b>	Human, Mouse, Rat
<b>Host</b>	Rabbit
<b>Clonality</b>	polyclonal
<b>Calculated MW</b>	27687

## Additional Information

---

<b>Gene ID</b>	4990
<b>Other Names</b>	Homeobox protein SIX6, Homeodomain protein OPTX2, Optic homeobox 2, Sine oculis homeobox homolog 6, SIX6, OPTX2, SIX9
<b>Dilution</b>	WB~~1:1000 IF~~1:100
<b>Format</b>	Rabbit IgG in phosphate buffered saline (without Mg2+ and Ca2+), pH 7.4, 150mM NaCl, 0.09% (W/V) sodium azide and 50% glycerol.
<b>Storage Conditions</b>	-20°C

## Protein Information

---

<b>Name</b>	SIX6
<b>Synonyms</b>	OPTX2, SIX9
<b>Function</b>	May be involved in eye development.
<b>Cellular Location</b>	Nucleus {ECO:0000255 PROSITE-ProRule:PRU00108}.
<b>Tissue Location</b>	Expressed in the developing and adult retina. Also expressed in the hypothalamic and the pituitary regions

## Background

---

May be involved in eye development.

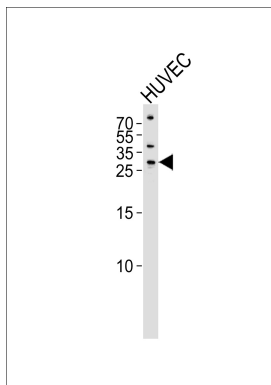
## References

---

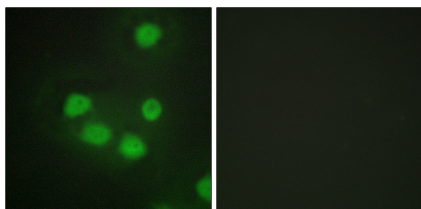
Leppert G.S.,et al.Submitted (OCT-1997) to the EMBL/GenBank/DDBJ databases.  
Lopez-Rios J.,et al.Mech. Dev. 83:155-159(1999).  
Gallardo M.E.,et al.Genomics 61:82-91(1999).  
Kitano T.,et al.Mol. Biol. Evol. 21:936-944(2004).  
Mayya V.,et al.Sci. Signal. 2:RA46-RA46(2009).

## Images

---



Western blot analysis of lysate from HUVEC cell line,using SIX6 Antibody(AP50710). AP50710 was diluted at 1:1000. A goat anti-rabbit IgG H&L(HRP) at 1:5000 dilution was used as the secondary antibody.Lysate at 35ug.



Immunofluorescence analysis of HepG2 cells, using SIX6 antibody.

Please note: All products are 'FOR RESEARCH USE ONLY. NOT FOR USE IN DIAGNOSTIC OR THERAPEUTIC PROCEDURES'.