

# ERF Antibody

Purified Rabbit Polyclonal Antibody (Pab)

Catalog # AP50713

## Product Information

---

<b>Application</b>	WB, IHC
<b>Primary Accession</b>	<a href="#">P50548</a>
<b>Reactivity</b>	Human, Mouse
<b>Host</b>	Rabbit
<b>Clonality</b>	polyclonal
<b>Calculated MW</b>	58703

## Additional Information

---

<b>Gene ID</b>	2077
<b>Other Names</b>	ETS domain-containing transcription factor ERF, Ets2 repressor factor, PE-2, ERF
<b>Dilution</b>	WB~~1:1000 IHC~~1:50-100
<b>Format</b>	Rabbit IgG in phosphate buffered saline (without Mg <sup>2+</sup> and Ca <sup>2+</sup> ), pH 7.4, 150mM NaCl, 0.09% (W/V) sodium azide and 50% glycerol.
<b>Storage Conditions</b>	-20°C

## Protein Information

---

<b>Name</b>	ERF
<b>Function</b>	Potent transcriptional repressor that binds to the H1 element of the Ets2 promoter. May regulate other genes involved in cellular proliferation. Required for extraembryonic ectoderm differentiation, ectoplacental cone cavity closure, and chorioallantoic attachment (By similarity). May be important for regulating trophoblast stem cell differentiation (By similarity).
<b>Cellular Location</b>	Nucleus.
<b>Tissue Location</b>	Highest levels in testis, ovary, pancreas, and heart.

## Background

---

Potent transcriptional repressor that binds to the H1 element of the Ets2 promoter. May regulate other genes involved in cellular proliferation. Required for extraembryonic ectoderm differentiation, ectoplacental cone cavity closure, and chorioallantoic attachment (By similarity). May be important for regulating

trophoblast stem cell differentiation (By similarity).

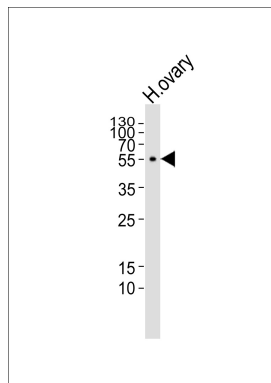
## References

---

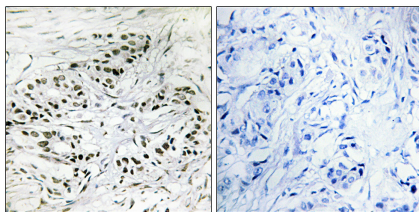
Sgouras D.N.,et al.EMBO J. 14:4781-4793(1995).  
Ota T.,et al.Nat. Genet. 36:40-45(2004).  
Totoki Y.,et al.Submitted (MAR-2005) to the EMBL/GenBank/DDBJ databases.  
Grimwood J.,et al.Nature 428:529-535(2004).  
Mural R.J.,et al.Submitted (JUL-2005) to the EMBL/GenBank/DDBJ databases.

## Images

---



Western blot analysis of lysate from human ovary tissue lysate,using ERF Antibody(AP50713). AP50713 was diluted at 1:1000. A goat anti-rabbit IgG H&L(HRP) at 1:5000 dilution was used as the secondary antibody.Lysate at 35ug.



Immunohistochemistry analysis of paraffin-embedded human breast carcinoma tissue, using ERF antibody.

## Citations

---

- [Generation of two ERF gene knockout human embryonic stem cell lines using CRISPR/Cas9 system](#)

Please note: All products are 'FOR RESEARCH USE ONLY. NOT FOR USE IN DIAGNOSTIC OR THERAPEUTIC PROCEDURES'.