

SLC15A1 Antibody

Purified Rabbit Polyclonal Antibody (Pab)
Catalog # AP50715

Product Information

Application	WB
Primary Accession	P46059
Reactivity	Human, Mouse, Rat
Host	Rabbit
Clonality	polyclonal
Calculated MW	78806

Additional Information

Gene ID	6564
Other Names	Solute carrier family 15 member 1, Intestinal H(+)/peptide cotransporter, Oligopeptide transporter, small intestine isoform, Peptide transporter 1, SLC15A1, PEPT1
Dilution	WB~~1:1000
Format	Rabbit IgG in phosphate buffered saline (without Mg ²⁺ and Ca ²⁺), pH 7.4, 150mM NaCl, 0.09% (W/V) sodium azide and 50% glycerol.
Storage Conditions	-20°C

Protein Information

Name	SLC15A1 (HGNC:10920)
Function	Electrogenic proton-coupled amino-acid transporter that transports oligopeptides of 2 to 4 amino acids with a preference for dipeptides. Transports neutral and monovalently charged peptides with a proton to peptide stoichiometry of 1:1 or 2:1 (By similarity) (PubMed: 15521010 , PubMed: 18367661 , PubMed: 19685173 , PubMed: 26320580 , PubMed: 7896779 , PubMed: 8914574 , PubMed: 9835627). Primarily responsible for the absorption of dietary di- and tripeptides from the small intestinal lumen (By similarity). Mediates transepithelial transport of muramyl and N-formylated bacterial dipeptides contributing to recognition of pathogenic bacteria by the mucosal immune system (PubMed: 15521010 , PubMed: 9835627).
Cellular Location	Apical cell membrane; Multi-pass membrane protein. Note=Localized to the apical membrane of enterocytes
Tissue Location	Expressed in small intestine.

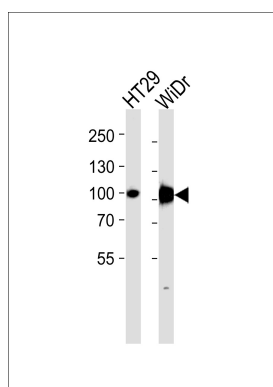
Background

Proton-coupled intake of oligopeptides of 2 to 4 amino acids with a preference for dipeptides. May constitute a major route for the absorption of protein digestion end-products.

References

- Liang R.,et al.J. Biol. Chem. 270:6456-6463(1995).
Dunham A.,et al.Nature 428:522-528(2004).
Saito S.,et al.J. Hum. Genet. 47:576-584(2002).
Anderle P.,et al.J. Pharmacol. Exp. Ther. 316:636-646(2006).

Images



Western blot analysis of lysates from HT29,WiDr cell line (from left to right),using SLC15A1 Antibody(AP50715). AP50715 was diluted at 1:1000 at each lane. A goat anti-rabbit IgG H&L(HRP) at 1:5000 dilution was used as the secondary antibody.Lysates at 35ug per lane.

Please note: All products are 'FOR RESEARCH USE ONLY. NOT FOR USE IN DIAGNOSTIC OR THERAPEUTIC PROCEDURES'.